

BLUEPRINT JORDAN RIVER

2022 REFRESH

Jordan River Commission Partners : Final Review

ACKNOWLEDGEMENTS

- Steering committee (JRC Technical Advisory Committee) and working groups
- 8,000 Utahns
- Consultants – River Restoration, Environmental Planning Group, Alta Planning and Design, Grassroots Communications
- TLC program – WFRC, UDOT, Salt Lake County, UTA
- Funding Partners:



INTRODUCTION AND HISTORY

The Jordan River flows over 50 miles through Utah's population and economic center—the Wasatch Front. The parkway is home to many species of native wildlife including deer, beaver, fox, migratory birds and waterfowl, and various other mammals, amphibians, reptiles, and fish. Together with the Great Salt Lake and Utah Lake, the Jordan River provides critical breeding, foraging, and resting areas for migratory birds.

Industrial impacts



Dredging the Surplus Canal on the Jordan River, June 1913. Used with permission, Utah State Historical Society.

THE BLUEPRINT JORDAN RIVER


In 2008, “Blueprint Jordan River” was released. Recognizing the hidden potential of the river despite its degradation over the last century, Envision Utah, Salt Lake County, and numerous other community leaders came together to generate a unified vision and improve coordination between the 3 counties and 15 cities that the river traversed.



Red Butte, Emigration, and Parleys creeks spill into the Jordan River at the same location, 1300 South and 900 West in Salt Lake City. Sandwiched between an auto shop and half-burnt home, the site existed in a neglected condition. The area was paved over a dead-end segment of 1300 South and was full of weeds and garbage.



Over \$3 million was secured to uncover 200 feet of combined stream in a newly restored channel, construct a 120- foot bridge to connect the site to the Jordan River Trail, and add a public plaza.



PROGRESS TOWARDS BLUEPRINT VISION: 2008 - 2020



RECREATION

- Cities and counties completed the lake-to-lake Jordan River Trail. Numerous connections, including integration with the Golden Spoke trail network, were also established with local and regional trails and public transportation stops.
- State and local governments expanded recreation opportunities by installing boat ramps, improving safety and paddling conditions in the River, developing new facilities, and adding to the regional trail network.
- Events like Get to the River, Golden Spoke, and the Range to River Relay helped to elevate the awareness and status of the Jordan River Parkway.
- The Utah State legislature established ongoing funding for the Jordan River Recreation Area.



ENVIRONMENT

- State agencies, counties, and municipalities engaged in several restoration projects resulting in improved ecological conditions and biodiversity. Efforts range from the extensive Big Bend Restoration project to small-scale native tree planting programs.
- Volunteer efforts cleared tons of litter and weeds from the Parkway.
- Sewer districts invested in water quality upgrades for wastewater plants that feed into the River.
- Salt Lake City and Lehi adopted ordinances limiting development near the Jordan River.



SAFETY

- Cities and counties installed directional signage and mile markers to improve wayfinding and emergency response along the Jordan River Trail.
- Patrolling, public health & safety programs, and law enforcement access were expanded.

REFRESHING THE BLUEPRINT

From March through October 2020, extensive public engagement measured how Utahns' perceptions, concerns, ideas, and interests for the Jordan River Parkway have changed over the last 10+ years. Over 8,000 people contributed their thoughts and ideas to the refreshed vision for the Jordan River Parkway in focus groups, online meetings, and an online survey.

Phase 1: Listening

- 7 priority working groups review 2008 blueprint, performance, and goals
- Pivot to 3 day online public focus group and 2 virtual meetings

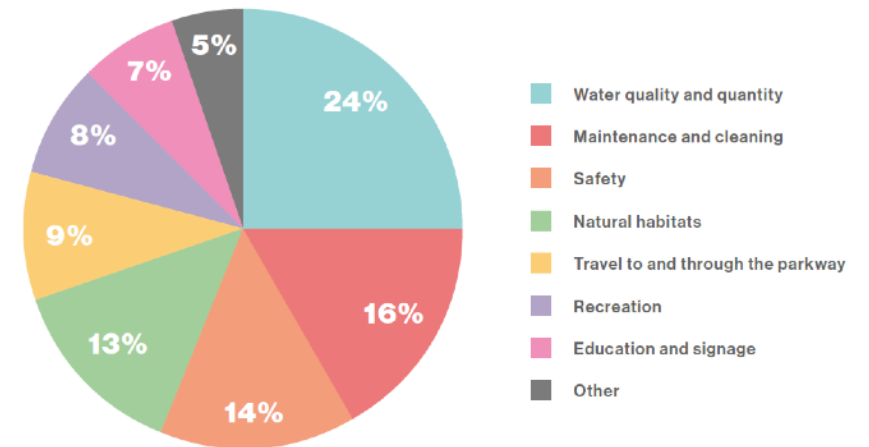
Phase 2: Survey

- Online survey to explore public priorities and preferences
- Available in English and Spanish

Phase 3: Strategizing

- Expert working groups and consultant team develop and refine implementation strategies
- Create the vision document

PRIORITIES FOR IMPROVING THE JORDAN RIVER PARKWAY





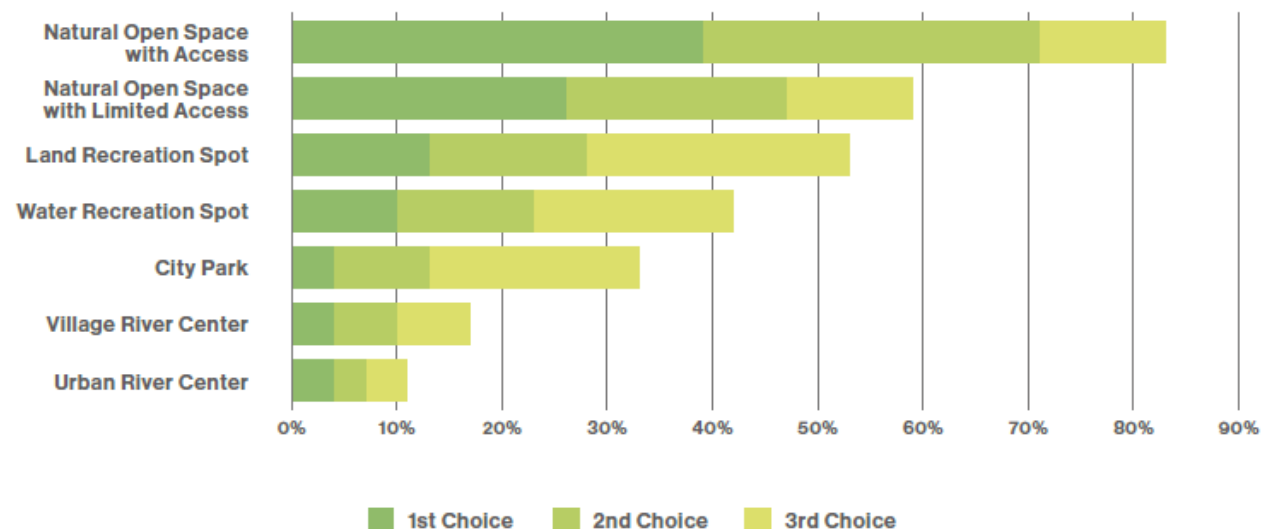
TAKE THE BLUEPRINT JORDAN RIVER 2020 SURVEY TODAY!

Social media posts by project partners and paid social media advertising generated the most survey responses.



Lawn signs posted in English and Spanish throughout the parkway prompted people visiting or traveling through the Jordan River Parkway to take the survey.

IMPORTANT PLACES TO CREATE AND PRESERVE IN THE JORDAN RIVER PARKWAY



The survey identified natural open spaces with or without public access as the most important places in the parkway, followed by recreational spaces.

PERCEPTIONS OF THE JORDAN RIVER PARKWAY



Survey respondents rated the Jordan River Parkway highly on importance, accessibility, beauty, and nature. Perceptions about recreation opportunities, safety, and cleanliness were mixed.

VISION & ACTION PLAN

THE EMERALD RIBBON OF THE WASATCH FRONT

Utahns envision a parkway that contains pleasant natural areas and a healthily functioning river that provides quality habitat for wildlife; is safe, clean, and well-maintained; and offers great recreation, leisure, and educational opportunities in natural and improved settings from lake to lake.

Further, they see a parkway that supports physical and mental health and that makes stewards and advocates of its visitors.

OVERARCHING STRATEGIES

1. Collaboration
2. The river is a regional system
3. Monitoring, reporting, & iteration
4. Consider all potential funding sources

PRACTICES FOR RIVERFRONT COMMUNITIES

Connecting the Blueprint and Best Practices Guide

Land use **L**

Environment **E**

Recreation **R**

Stormwater **S**

Utilities **U**



HABITAT AND NATURAL SYSTEMS

- Protect and preserve natural open spaces
- Manage habitats and natural ecosystems



WATER AND THE RIVER

- Use a coordinated watershed approach to improve water quality
- Manage river flows for natural river function
- Enhance the hydrological function of the river



COMFORT AND INCLUSIVITY

- Make the parkway a welcoming place for visitors of all abilities, backgrounds, and circumstances
- Comprehensive maintenance, trash removal, and cleaning
- Mitigate homelessness



RECREATION

- Support, expand, and enhance opportunities for recreational uses and active transportation throughout the parkway



SAFETY AND WELLBEING

- Improve safety and security while fostering a comfortable environment for recreation and leisure
- Add balanced lighting solutions and surveillance to improve visibility while minimizing impacts to wildlife
- Manage wildfire risk and prepare for response and recovery



DEVELOPMENT AND TRANSPORTATION

- Improve access to the parkway and enhance the parkway's role as a regional transportation corridor
- Ensure that development highlights the Jordan River and enhances the parkway
- Promote harmony between infrastructure and river functions

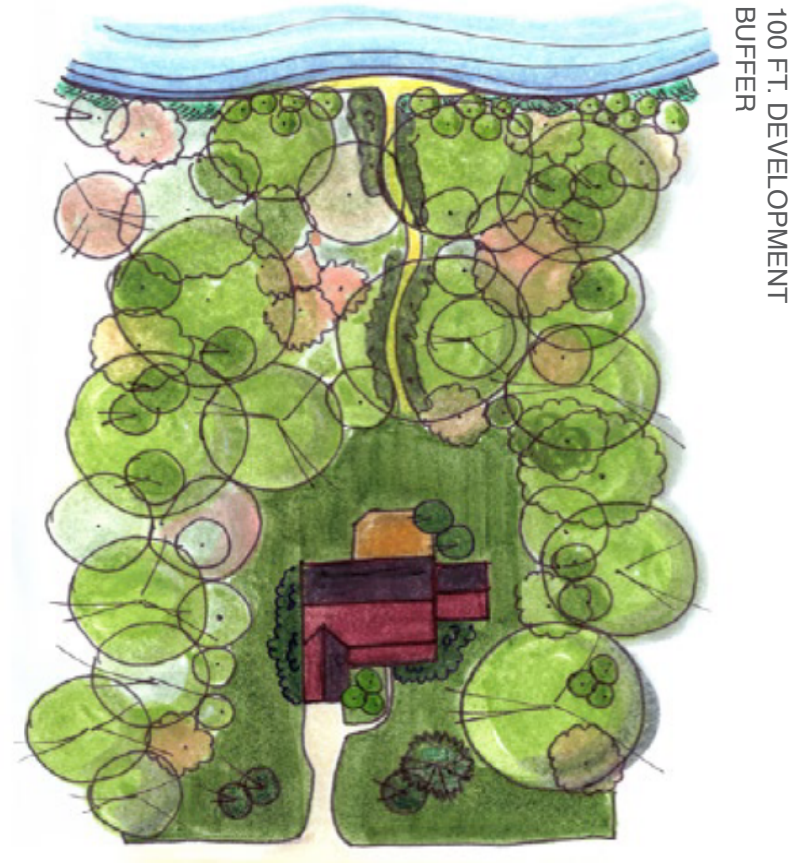


COMMUNICATIONS, EDUCATION, AND ART

- Improve visitor experience, wayfinding, point of interest identification, and education
- Provide experiential learning opportunities for both local youth and adults
- Support art, placemaking, and community engagement

GOAL: PROTECT AND PRESERVE NATURAL OPEN SPACES

1. DEVELOP ACCESS RESTRICTIONS BASED ON SITE SENSITIVITY
2. CREATE AND ENFORCE DEVELOPMENT LIMITS IN NATURAL OPEN SPACES
3. USE REGULATORY TOOLS TO LIMIT THE IMPACTS OF DEVELOPMENT WITHIN THE CORRIDOR
























GOAL: OPTIMIZE HABITATS AND NATURAL ECOSYSTEMS

1. SUPPORT DESIRABLE, NATIVE, AND BIODIVERSE ECOSYSTEMS
2. DEVELOP MONITORING AND EVALUATION PLANS
3. RESTORE QUALITY HABITAT FOR WILDLIFE
4. DEVELOP AN EDUCATION OUTREACH PROGRAM FOR LAND MANAGERS
5. PROVIDE RESOURCES TO LANDOWNERS
6. DEVELOP ROBUST ADAPTIVE MANAGEMENT STRATEGIES
7. ENHANCE COORDINATION BETWEEN ENTITIES ALONG THE RIVER
8. TAKE ADVANTAGE OF AVAILABLE FUNDING SOURCES TO SUPPORT HABITAT AND ECOSYSTEM MANAGEMENT STRATEGIES

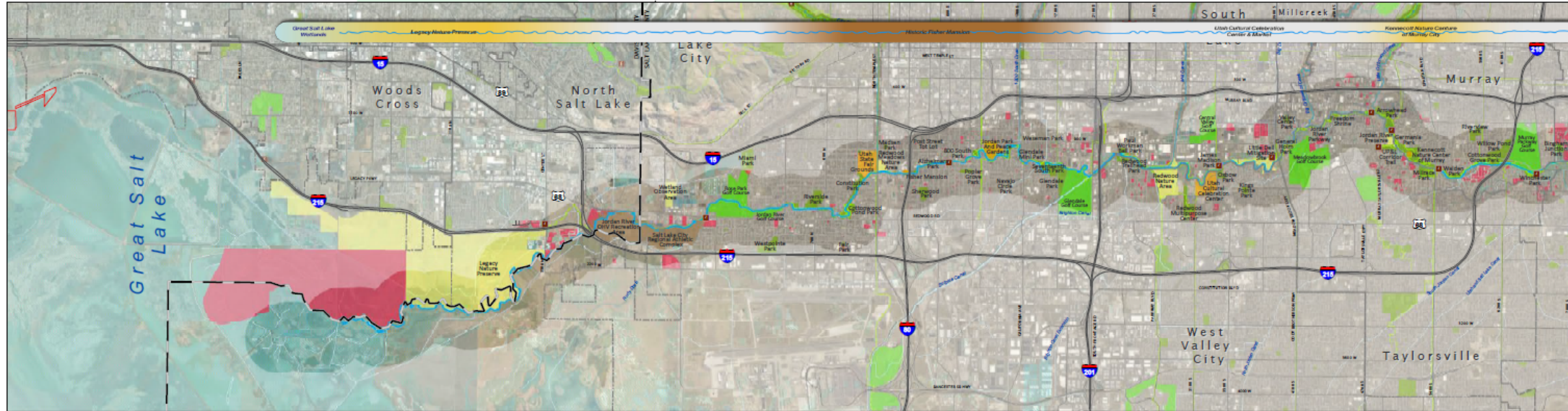


HABITAT AND NATURAL SYSTEMS MAP

Legend

-  Jordan River
-  Existing Trails
-  Trailhead
-  Conservation Easement
-  Upland Habitat
-  Emergent Marsh
-  Park
-  Golf Course
-  Recreation Area
-  Natural Area/Preserve
-  Destination Area
-  New parcels developed 2008 - 2019
-  Wetland
-  Lake/Pond
-  Major Stream
-  Minor Stream
-  Canal/Ditch
-  Municipal Boundary
-  County Boundary
-  Street/Highway
-  Interstate

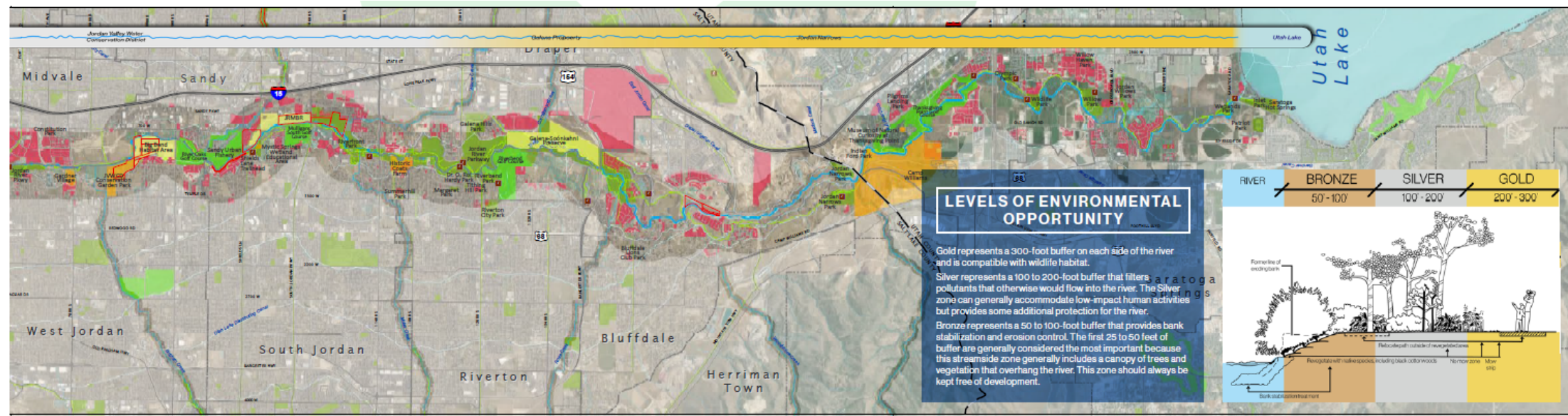
1 inch = 1 mile



Legend

- Jordan River
- Existing Trails
- Trailhead
- Conservation Easement
- Upland Habitat
- Emergent Marsh
- Park
- Golf Course
- Recreation Area
- Natural Area/Preserve
- Destination Area
- New parcels developed 2008 - 2019
- Wetland
- Lake/Pond
- Major Stream
- Minor Stream
- Canal/Ditch
- Municipal Boundary
- County Boundary
- Street/Highway
- Interstate

1 inch = 1 mile

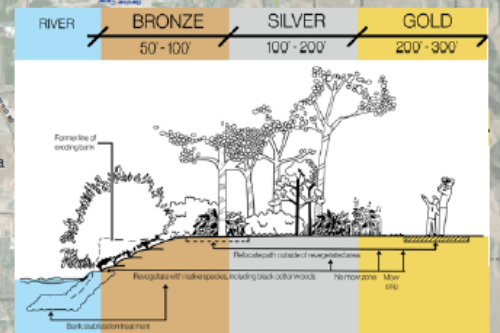


LEVELS OF ENVIRONMENTAL OPPORTUNITY

Gold represents a 300-foot buffer on each side of the river and is compatible with wildlife habitat.

Silver represents a 100 to 200-foot buffer that filters pollutants that otherwise would flow into the river. The Silver zone can generally accommodate low-impact human activities but provides some additional protection for the river.

Bronze represents a 50 to 100-foot buffer that provides bank stabilization and erosion control. The first 25 to 50 feet of buffer are generally considered the most important because this streamside zone generally includes a canopy of trees and vegetation that overhangs the river. This zone should always be kept free of development.



GOAL: USE A COORDINATED WATERSHED APPROACH TO IMPROVE WATER QUALITY

1. BETTER UNDERSTAND THE WATER QUALITY CONDITIONS OF THE RIVER
2. SUPPORT SEWER IMPROVEMENT PROGRAMS TO IMPROVE WATER QUALITY IN THE RIVER
3. FOCUS ON UTAH LAKE WATER INPUTS TO THE RIVER
- ➡ 4. INTEGRATE CREEKS AND CANALS INTO WATER MANAGEMENT PLANNING
5. MANAGE AGRICULTURE AND LANDSCAPING RUNOFF
- ➡ 6. MANAGE URBAN RUNOFF AND STORMWATER





GOAL: MANAGE RIVER FLOWS FOR NATURAL RIVER FUNCTION

1. MAINTAIN SUITABLE WATER LEVELS TO SUPPORT AQUATIC AND RIPARIAN HABITATS
2. MINIMIZE DISRUPTIVE FLOOD FLOWS AND RAPID CHANGES IN FLOW RATES OUT OF UTAH LAKE
3. IMPROVE FLOOD CONVEYANCE CAPACITY



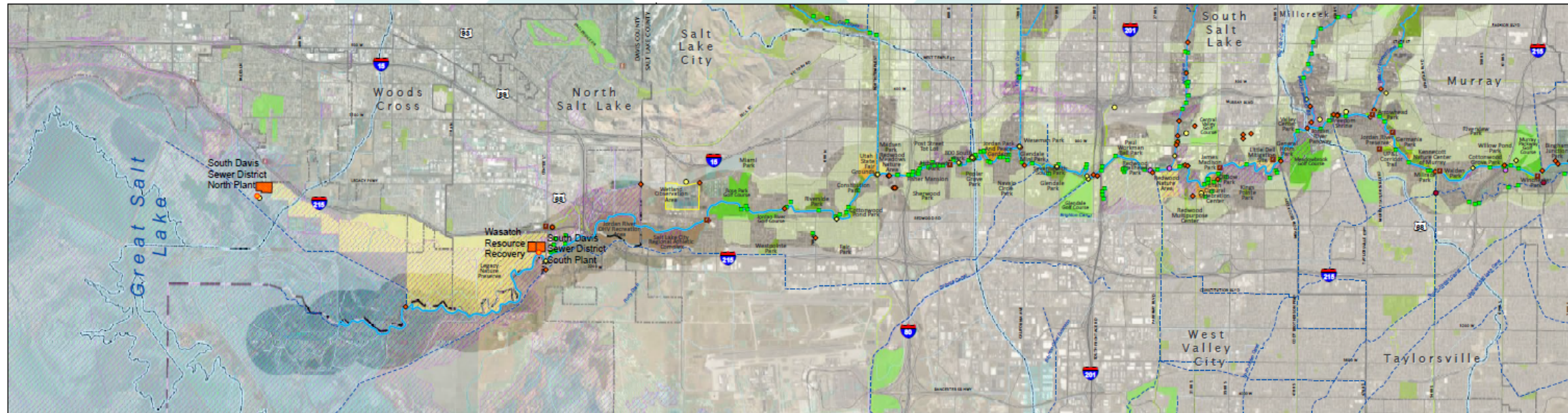
GOAL: ENHANCE THE HYDROLOGICAL FUNCTION OF THE RIVER

1. DEVELOP BETTER UNDERSTANDING OF THE HYDROLOGICAL FUNCTIONS OF THE RIVER
2. RESTORE THE RIVER'S "MEANDER CORRIDOR" OR "FLOODPLAIN CORRIDOR" WHERE POSSIBLE
3. STABILIZE RIVERBANKS WHERE NEEDED



The Big Bend Project is restoring 70 acres of habitat for migratory birds and other wildlife, stabilizing riverbanks and constructing a new meandering channel and wetlands that will reconnect the floodplain with the river.

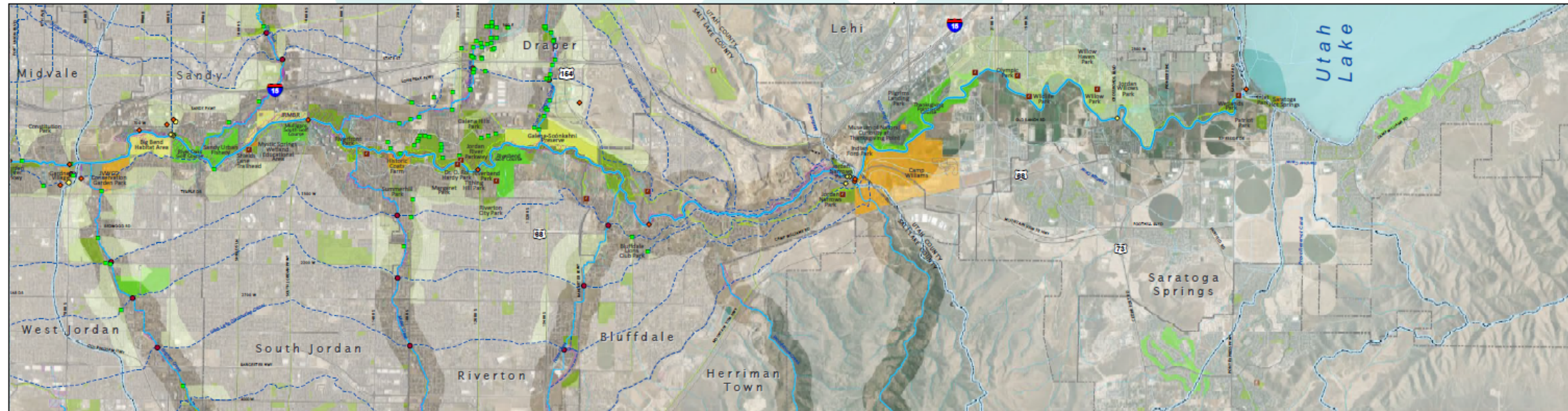
Legend



Legend

-  Jordan River
-  Existing Trails
-  Trailhead
-  Park
-  Golf Course
-  Recreation Area
-  Natural Area/Preserve
-  Destination Area
-  Wetland
-  Lake/Pond
-  Major Stream
-  Minor Stream
-  Canal/Ditch
-  Municipal Boundary
-  County Boundary
-  Street/Highway
-  Interstate
-  USGS Gage Station
-  Stream Monitor Site
-  Canal Overflow
-  Irrigation Return
-  Sewer Outfall
-  Sewer Facility
-  Storm Water Outfall
-  Storm Water Detention Basin
-  Waste Water Treatment Site
-  Flood Control Channel
-  100 Year Flood Zone
-  Watershed Boundary HUC 10

1 inch = 1 miles



GOAL: MAKE THE PARKWAY A WELCOMING PLACE FOR VISITORS OF ALL ABILITIES, BACKGROUNDS, AND CIRCUMSTANCES

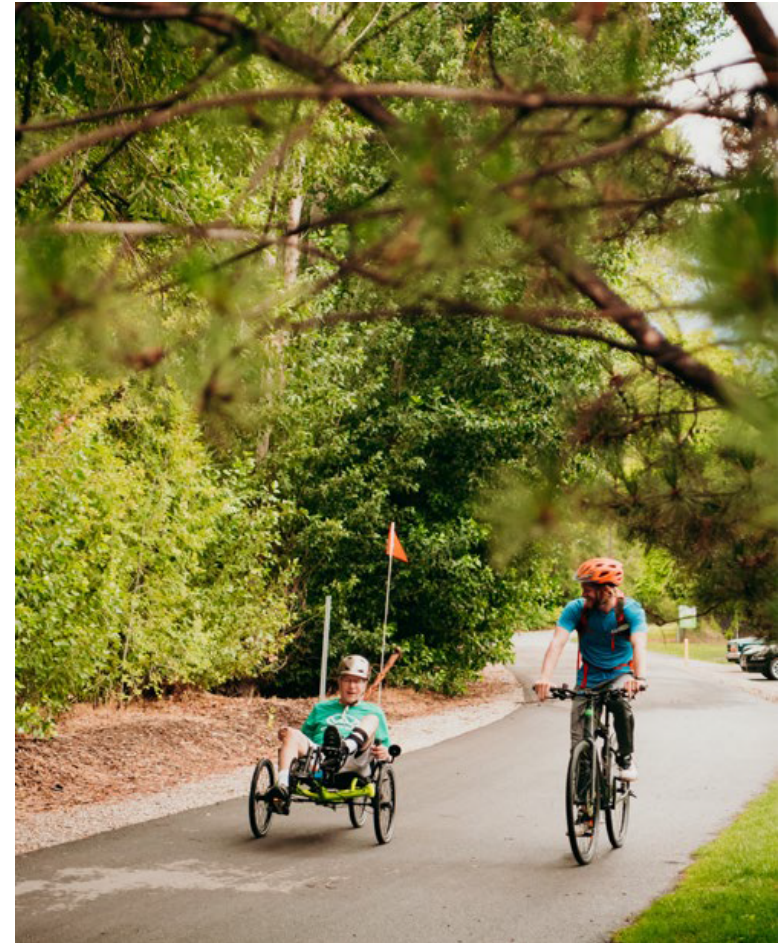
1. PROVIDE CLEAN AND FUNCTIONAL FACILITIES IN APPROPRIATE LOCATIONS THROUGHOUT THE PARKWAY



2. DESIGN INFRASTRUCTURE AND FACILITIES FOR VISITORS OF ALL ABILITIES



3. FOSTER AN INCLUSIVE CULTURE WITHIN THE JORDAN RIVER PARKWAY



GOAL: PROVIDE CONSISTENT AND COMPREHENSIVE MAINTENANCE, TRASH REMOVAL, AND CLEANING

1. REMOVE TRASH, DOG WASTE, AND OTHER DEBRIS FROM THE PARKWAY
2. CLEAN AND MAINTAIN PUBLIC FACILITIES





GOAL: MITIGATE HOMELESSNESS IN THE WASATCH FRONT

Strategies:

- Support mitigation efforts
- Connect people with resources
- Stewardship by people experiencing homelessness and service providers

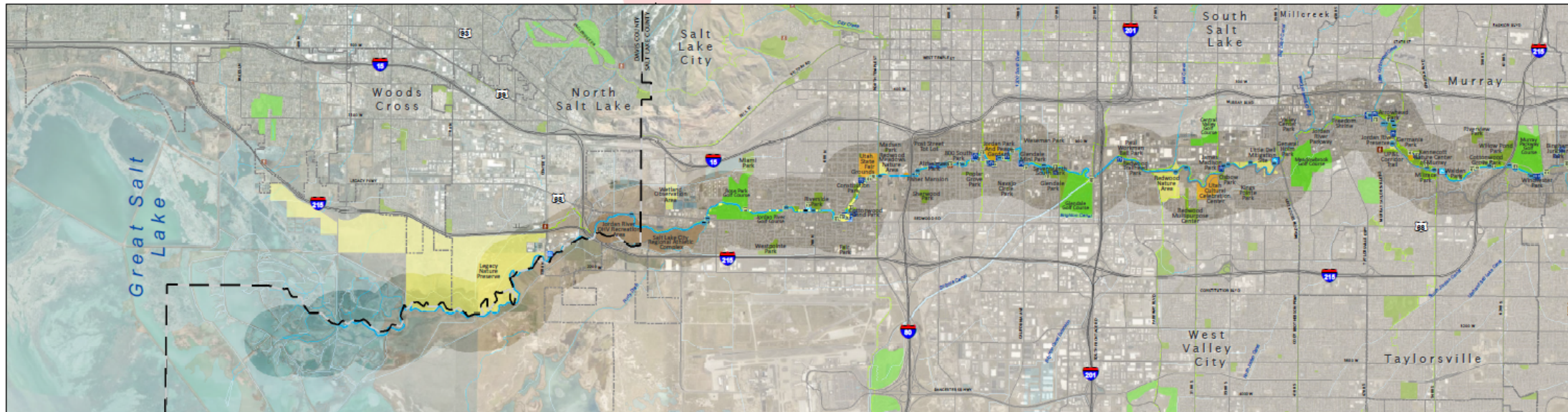


COMFORT AND INCLUSIVITY MAP

Legend

- Jordan River
- Existing Trails
- Trailhead
- Conservation Easement
- Upland Habitat
- Emergent Marsh
- Park
- Golf Course
- Recreation Area
- Natural Area/Preserve
- Destination Area
- Wetland
- Lake/Pond
- Major Stream
- Minor Stream
- Canal/Ditch
- Municipal Boundary
- County Boundary
- Street/Highway
- Interstate
- Bench
- Drinking Fountain
- Garbage Receptacle
- Street Lighting
- Picnic Facility
- Restroom

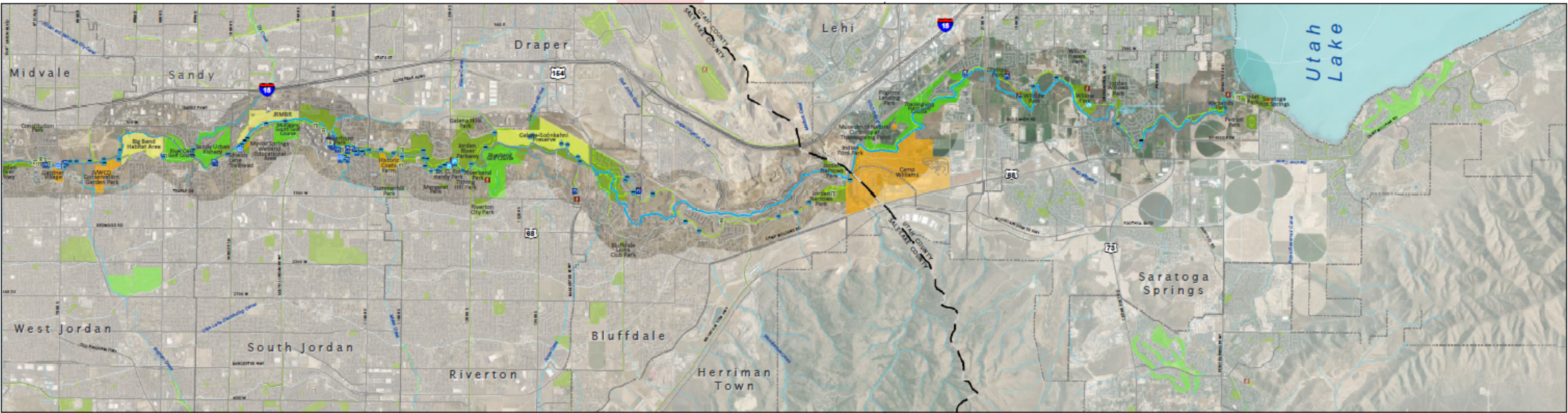
1 inch = 1 mile



Legend

- | | |
|-----------------------|-----------------------------|
| Jordan River | USGS Gage Station |
| Existing Trails | Stream Monitor Site |
| Trailhead | Canal Overflow |
| Park | Irrigation Return |
| Golf Course | Sewer Outfall |
| Recreation Area | Sewer Facility |
| Natural Area/Preserve | Storm Water Outfall |
| Destination Area | Storm Water Detention Basin |
| Wetland | Waste Water Treatment Site |
| Lake/Pond | Flood Control Channel |
| Major Stream | 100 Year Flood Zone |
| Minor Stream | Watershed Boundary HUC 10 |
| Canal/Ditch | |
| Municipal Boundary | |
| County Boundary | |
| Interstate | |

1 inch = 1 miles



GOAL: ENHANCE OPPORTUNITIES FOR RECREATIONAL USES AND ACTIVE TRANSPORTATION THROUGHOUT THE PARKWAY

1. DEFINE AND IMPLEMENT CONSISTENT TRAIL AND PATHWAY STANDARDS THAT EMPHASIZE SAFETY AND COMFORT
- ➔ 2. ADOPT AND IMPLEMENT A CONSISTENT MAINTENANCE SCHEDULE FOR THE JORDAN RIVER TRAIL THAT PROTECTS TRAIL INVESTMENT AND EXTENDS ITS LONGEVITY
3. PROVIDE ADEQUATE RECREATIONAL AMENITIES IN A VARIETY OF SETTINGS, INCLUDING BOTH PASSIVE AND ACTIVE RECREATIONAL USES























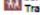

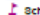








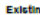
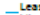

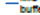

GOAL: ENHANCE OPPORTUNITIES FOR RECREATIONAL USES AND ACTIVE TRANSPORTATION THROUGHOUT THE PARKWAY

4. COORDINATE EVENTS AND PROGRAMS TO HIGHLIGHT AND ENCOURAGE RECREATION AND STEWARDSHIP
5. DEVELOP A WATER TRAIL SYSTEM DESIGNED TO SERVE SMALL NON-MOTORIZED WATERCRAFT, SUCH AS CANOES, KAYAKS, STAND-UP PADDLEBOARDS (SUPS), AND ROWING SCULLS



RECREATION MAP

Legend

-  Jordan River
-  Existing Trails
-  Trailhead
-  Front Runner Station
-  Transit Station
-  Park
-  Golf Course
-  Recreation Area
-  Natural Area/Preserve
-  Destination Area
-  Municipal Boundary
-  County Boundary
-  Lake/Pond
-  Major Stream
-  Minor Stream
-  Canal/Ditch
-  Street/Highway
-  Interstate
-  Potential Single Use Areas
-  Jordan River Trailhead
-  Restroom
-  School within 1 mile
-  Trail Does Not Meet Standard
-  Trail Hazard
-  Boat Access
-  Water Hazard
-  Mandatory Take-Out
-  Parking
- Existing Bikeways**
-  Least protected / bike lane
-  Mid protected / buffered bike lane
-  Most protected / separated bike lane
-  Multiuse
- Proposed Bikeways**
-  Least protected / bike lane
-  Mid protected / buff bike lane
-  Most protected / separated bike lane
-  Multiuse

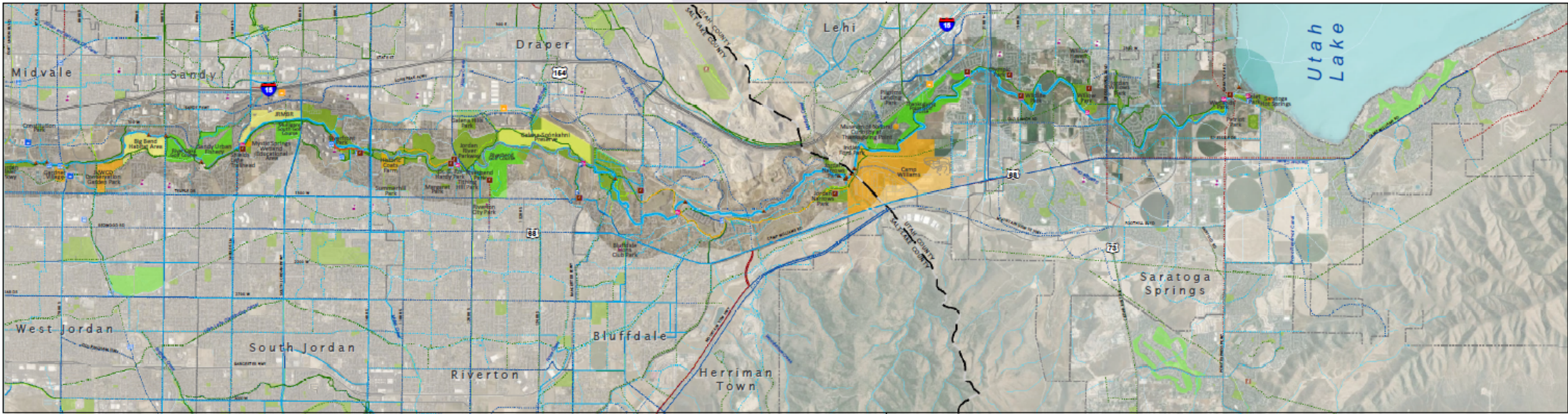
1 inch = 1 mile



Legend

- Jordan River
- Existing Trails
- Trailhead
- Front Runner Station
- Transit Station
- Park
- Golf Course
- Recreation Area
- Natural Area/Preserve
- Destination Area
- Municipal Boundary
- County Boundary
- Lake/Pond
- Major Stream
- Minor Stream
- Canal/Ditch
- Street/Highway
- Interstate
- Potential Single Use Areas
- Jordan River Trailhead
- Restroom
- School within 1 mile
- Trail Does Not Meet Standard
- Trail Hazard
- Boat Access
- Water Hazard
- Mandatory Take-Out
- Parking
- Existing Bikeways
 - Least protected / bike lane
 - Mid protected / buffered bike lane
 - Most protected / separated bike lane
 - Multituse
- Proposed Bikeway
 - Least protected / bike lane
 - Mid protected / buff bike lane
 - Most protected / separated bike lane
 - Multituse

1 inch = 1 mile





GOAL: IMPROVE SAFETY AND SECURITY WHILE FOSTERING A COMFORTABLE ENVIRONMENT FOR RECREATION AND LEISURE

Strategies:

- Coordinate for the appropriate agency or organization to respond to issues
- Bicycle or foot patrols
- Community engagement
- Volunteer rangers
- Safety audit
- Share crime and safety data
- Wayfinding and north-south mile markers



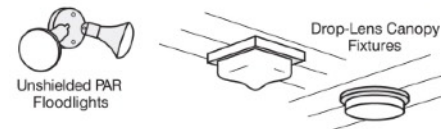
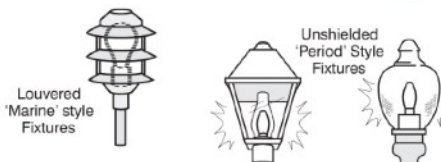
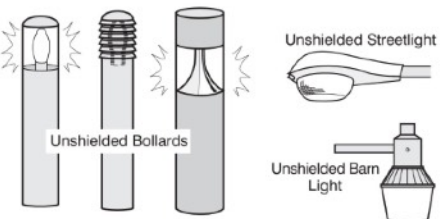
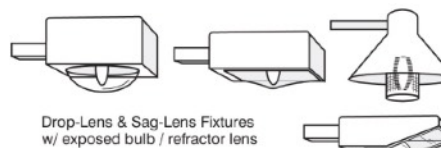
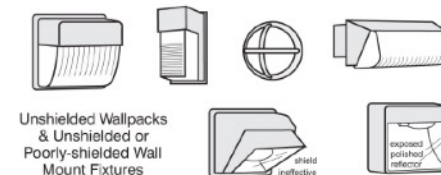
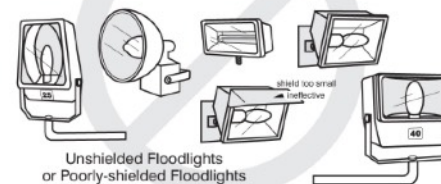
➡ GOAL: ADD BALANCED LIGHTING SOLUTIONS AND SURVEILLANCE WHERE APPROPRIATE TO IMPROVE VISIBILITY WHILE MINIMIZING IMPACTS TO WILDLIFE



Examples of Acceptable / Unacceptable Lighting Fixtures

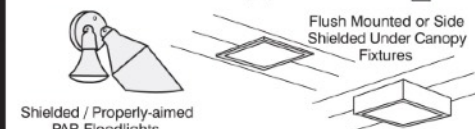
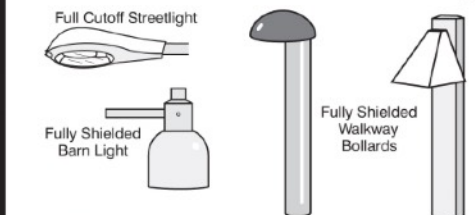
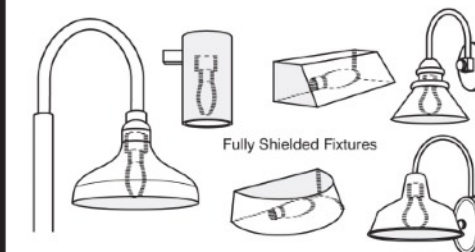
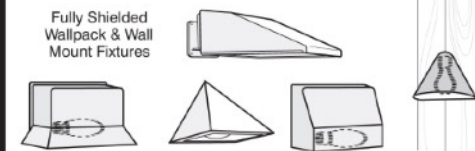
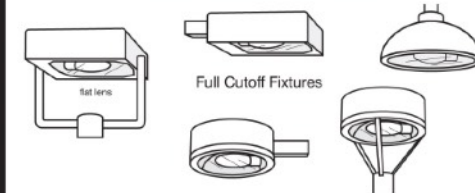
Unacceptable / Discouraged

Fixtures that produce glare and light trespass



Acceptable

Fixtures that shield the light source to minimize glare and light trespass and to facilitate better vision at night



Illustrations by Bob Crelin © 2005. Rendered for the Town of Southampton, NY. Used with permission.



GOAL: IMPROVE SAFETY AND SECURITY WHILE FOSTERING A COMFORTABLE ENVIRONMENT FOR RECREATION AND LEISURE

1. MITIGATE WILDFIRE RISK
2. QUICKLY AND EFFECTIVELY RESPOND TO WILDFIRES
3. SUPPORT RAPID RECOVERY FROM FIRES



GOAL: IMPROVE ACCESS TO THE PARKWAY AND ENHANCE THE PARKWAY'S ROLE AS A REGIONAL TRANSPORTATION CORRIDOR

1. INTEGRATE THE JORDAN RIVER TRAIL SYSTEM INTO THE REGIONAL ACTIVE TRANSPORTATION SYSTEM
2. INCREASE TRAILHEAD VISIBILITY TO PROMOTE ACTIVE TRANSPORTATION FOR EVERYDAY ACTIVITIES
3. PROMOTE NON-AUTOMOBILE COMMUTES THROUGH THE JORDAN RIVER PARKWAY



GOAL: IMPROVE ACCESS TO THE PARKWAY AND ENHANCE THE PARKWAY'S ROLE AS A REGIONAL TRANSPORTATION CORRIDOR

4. INTEGRATE THE TRANSIT NETWORK AND THE JORDAN RIVER TRAIL SYSTEM NETWORK TO ENHANCE TRANSIT ACCESS TO THE RIVER
5. ENSURE EQUITABLE ACCESS TO TRAILS AND PATHWAYS
6. DEVELOP A COMPREHENSIVE BICYCLE AND PEDESTRIAN COUNTING METHODOLOGY TO TRACK PROGRESS AND QUANTIFY BENEFITS



GOAL: ENSURE THAT DEVELOPMENT HIGHLIGHTS THE JORDAN RIVER AND ENHANCES THE PARKWAY

1. CLUSTER DEVELOPMENT IN THE PARKWAY INTO RIVER VILLAGE CENTERS TO REDUCE IMPACTS ON THE NATURAL ENVIRONMENT AND CREATE SYNERGISTIC COMMERCIAL BENEFITS
2. FOSTER VILLAGE CENTER IDENTITY AND BRANDING THAT HIGHLIGHTS THE RIVER AND COMPATIBLE USES
- ➔ 3. ORIENT WATERFRONT DEVELOPMENT TOWARDS THE RIVER



GOAL: PROMOTE HARMONY BETWEEN INFRASTRUCTURE AND RIVER FUNCTION

1. IMPROVE THE VISIBILITY AND RECOGNITION OF THE JORDAN RIVER AT TRANSPORTATION CROSSINGS
2. IMPROVE THE INFRASTRUCTURE NEAR AND OVER THE RIVER TO BE MORE RIVER-FRIENDLY

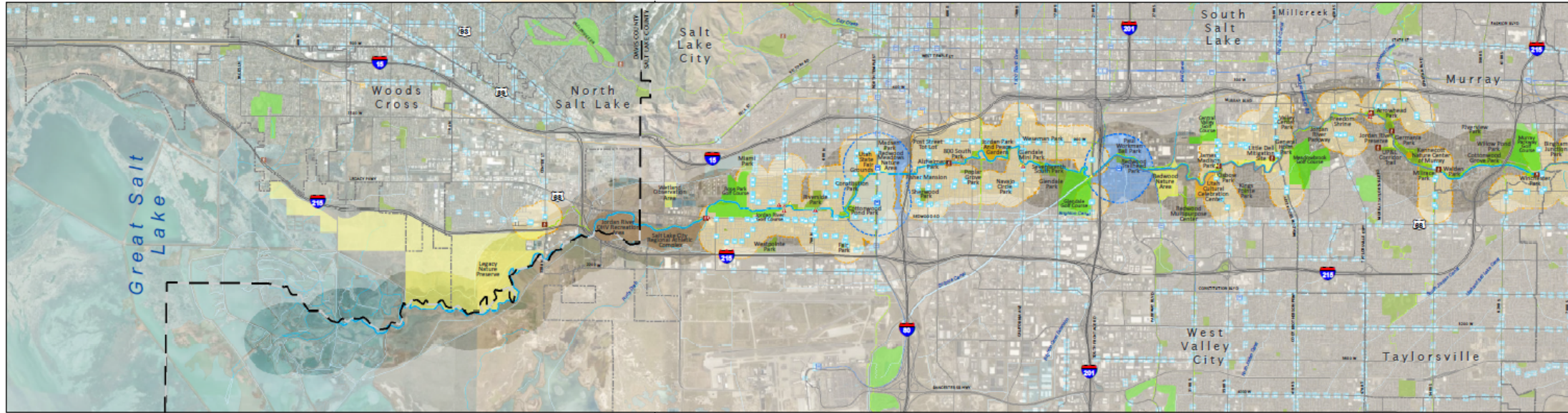


DEVELOPMENT AND TRANSPORTATION MAP

Legend

- Jordan River
- Existing Trails
- Trailhead
- Bike Crash
- Pedestrian Crash
- Front Runner Station
- Commuter Rail Route
- Trax Station
- Light Rail Route
- Bus Station
- Bus Walkshed 0.25 miles
- Rail Walkshed 0.5 miles
- Park
- Golf Course
- Recreation Area
- Natural Area/Preserve
- Destination Area
- Municipal Boundary
- County Boundary
- Lake/Pond
- Major Stream
- Minor Stream
- Canal/Ditch
- Street/Highway
- Interstate

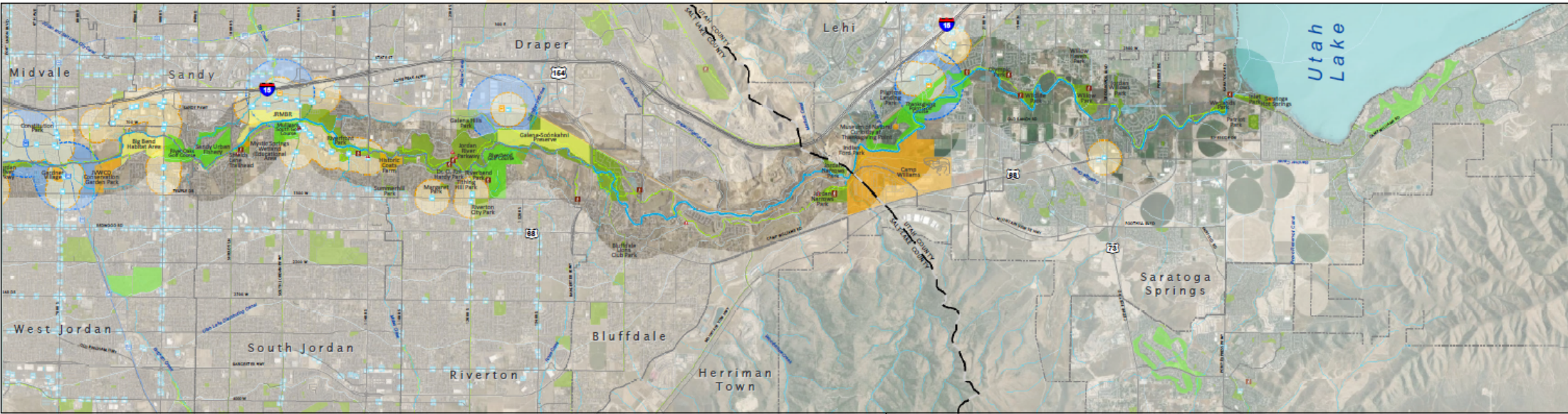
1 inch = 1 mile



Legend

- Jordan River
- Existing Trails
- Trailhead
- Bike Crash
- Pedestrian Crash
- Front Runner Station
- Commuter Rail Route
- Trax Station
- Light Rail Route
- Bus Station
- Bus Walkshed 0.25 miles
- Rail Walkshed 0.5 miles
- Park
- Golf Course
- Recreation Area
- Natural Area/Preserve
- Destination Area
- Municipal Boundary
- County Boundary
- Lake/Pond
- Major Stream
- Minor Stream
- Canal/Ditch
- Street/Highway
- Interstate

1 inch = 1 mile



GOAL: USE COMMUNICATIONS AND MESSAGING TO IMPROVE VISITOR EXPERIENCE, WAYFINDING, POINT OF INTEREST IDENTIFICATION, AND EDUCATION

1. ENCOURAGE UNIFORM SIGN DESIGN THROUGHOUT THE PARKWAY
2. IMPROVE DIRECTIONAL AND WAYFINDING SIGNAGE
- ➔ 3. MAKE WATER QUALITY DATA MORE ACCESSIBLE TO RIVER USERS



GOAL: USE COMMUNICATIONS AND MESSAGING TO IMPROVE VISITOR EXPERIENCE, WAYFINDING, POINT OF INTEREST IDENTIFICATION, AND EDUCATION

4. PROVIDE REGULATORY SIGNAGE AND MESSAGING FOR SOCIAL GUIDELINES, LOCAL REGULATIONS, AND SAFETY
5. PROVIDE ADDITIONAL INTERPRETIVE SIGNAGE, FACILITIES, AND ONLINE CONTENT TO PROMOTE EDUCATION AND STEWARDSHIP
6. UPDATE AND IMPROVE PUBLICLY AVAILABLE MAPS OF THE PARKWAY



GOAL: PROVIDE EXPERIENTIAL LEARNING OPPORTUNITIES



1. ENCOURAGE SCHOOLS TO TAKE ADVANTAGE OF THE JORDAN RIVER AS AN EDUCATIONAL RESOURCE
2. SUPPORT AND DEVELOP PUBLIC EDUCATIONAL PROGRAMMING IN COORDINATION WITH PARTNERS



GOAL: SUPPORT ART, PLACEMAKING, AND COMMUNITY ENGAGEMENT

1. ENCOURAGE PUBLIC AND PROFESSIONAL ART THROUGHOUT THE PARKWAY TO IMPROVE STEWARDSHIP AND COMMUNITY PRIDE
- ➔ 2. ENGAGE THE COMMUNITIES ALONG THE PARKWAY TO INFLUENCE ART, PLACEMAKING, LAND USE, AND OTHER FUTURE CHANGES IN THE PARKWAY

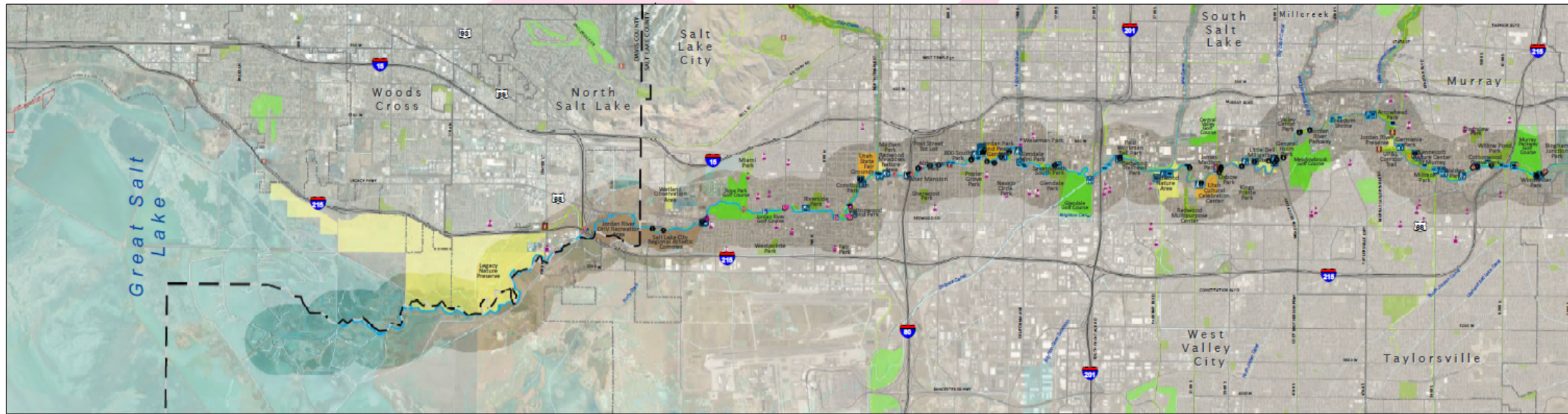


COMMUNICATION, EDUCATION, AND ART MAP



























Legend

- Jordan River
- Existing Trails
- Trailhead
- Conservation Easement
- Upland Habitat
- Emergent Marsh
- Park
- Golf Course
- Recreation Area
- Natural Area/Preserve
- Destination Area
- Wetland
- Lake/Pond
- Major Stream
- Minor Stream
- Canal/Ditch
- Municipal Boundary
- County Boundary
- Street/Highway
- Interstate
- Interpretive Signs
- Art Installations/Murals
- Wayfinding Sign
- Safety Sign
- Information Sign
- Library
- Schools within 1 mile

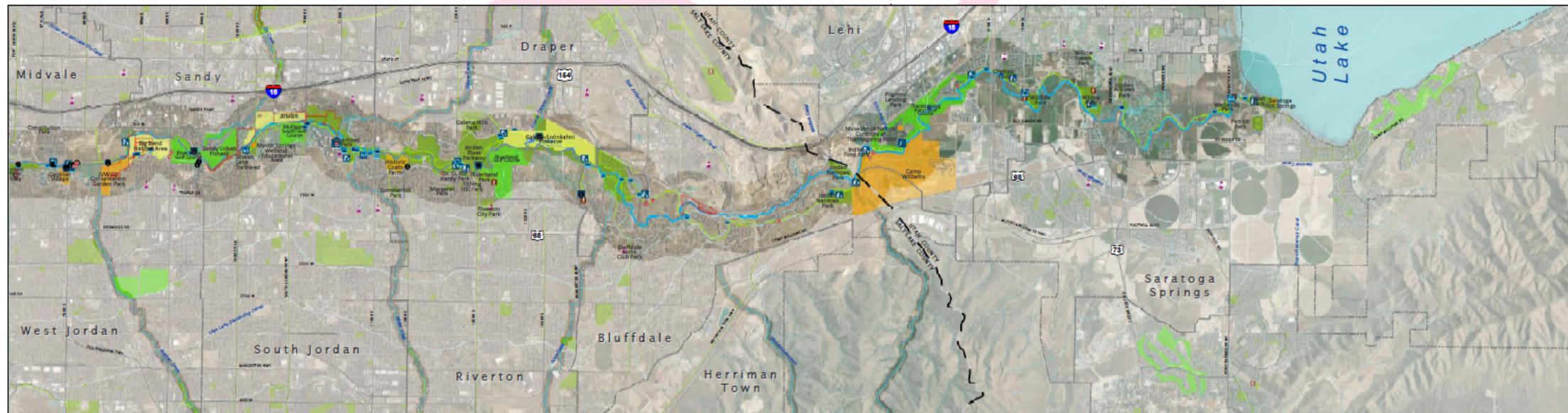
1 inch = 1 mile



Legend

-  Jordan River
-  Existing Trails
-  Trailhead
-  Conservation Easement
-  Upland Habitat
-  Emergent Marsh
-  Park
-  Golf Course
-  Recreation Area
-  Natural Area/Preserve
-  Wetland
-  Lake/Pond
-  Major Stream
-  Minor Stream
-  Canal/Ditch
-  Municipal Boundary
-  County Boundary
-  Street/Highway
-  Interstate
-  Interpretive Signs
-  Art Installations/Murals
-  Wayfinding Sign
-  Safety Sign
-  Information Sign
-  Library
-  Schools within 1 mile

1 inch = 1 mile



APPENDICES & REFERENCE DOCUMENTS

- 1 BLUEPRINT INVENTORY AND SURVEY RESULTS
- 2 JORDAN RIVER PARKWAY: PHYSICAL INVENTORY
- 3 BLUEPRINT JORDAN RIVER REFRESH SURVEY FINDINGS
- 4 BLUEPRINT JORDAN RIVER REFRESH SURVEY MAPPING RESULTS
- 5 BLUEPRINT JORDAN RIVER REFRESH WORKING GROUPS
- 6 BLUEPRINT JORDAN RIVER 2008
- 7 BEST PRACTICES FOR RIVERFRONT COMMUNITIES
- 8 FINAL JORDAN RIVER COMPREHENSIVE MANAGEMENT PLAN AND RECORD OF DECISION

Thank You!

Questions & Discussion