

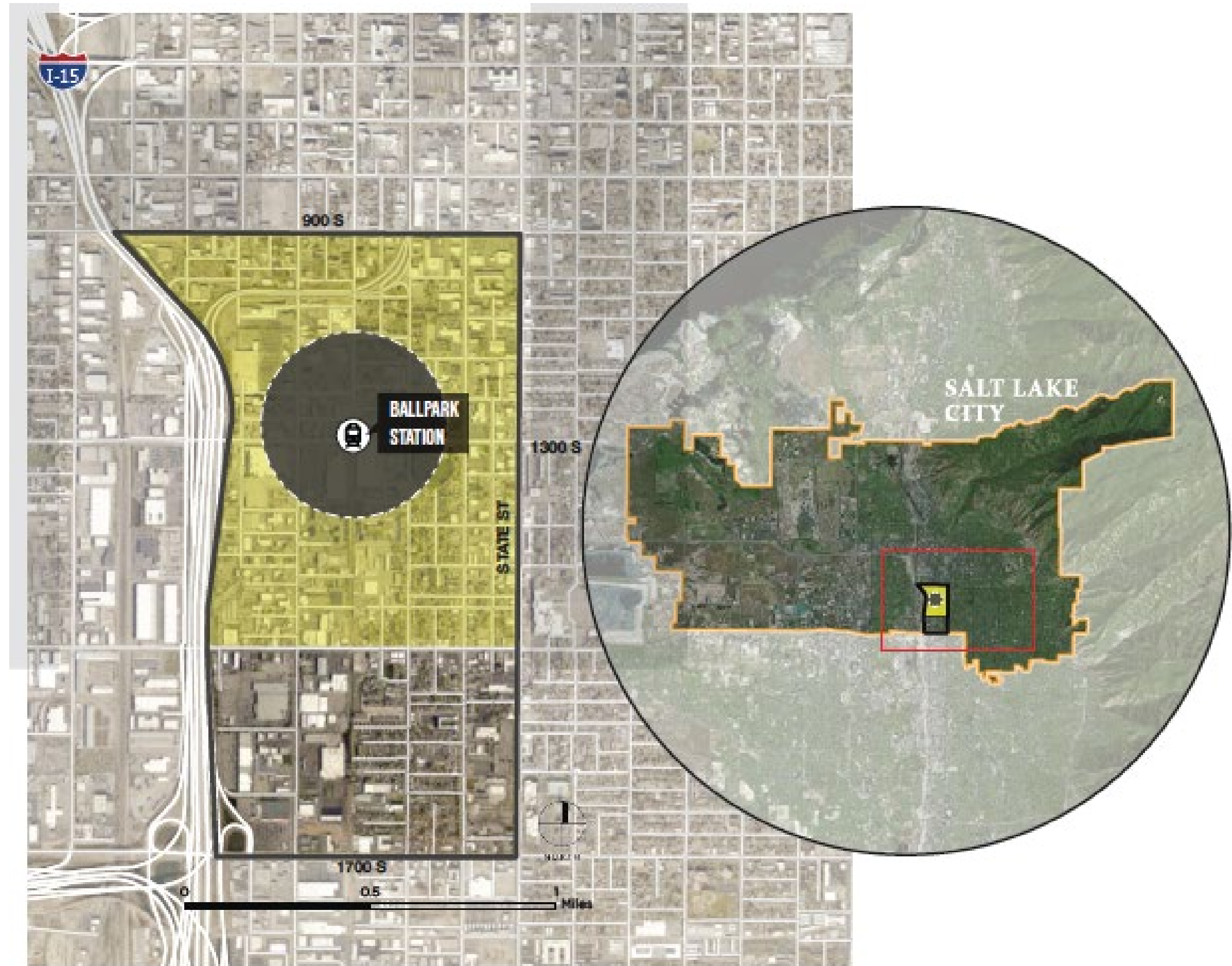


BALLPARK STATION AREA PLAN

PLNPCM2022-00323 – SMALL AREA PLAN

BACKGROUND

- Initiated December 2020
- Consultant GSBS
- Within Central Community and Downtown Master Plans
- Identifies Goals, Strategies, and Actions
- Capitalizes on community assets



PUBLIC PROCESS

- Online Survey Published March 2020.
 - Notices Sent To Entire Ballpark Community
- Steering Committee Meetings Throughout 2021
- Project Webpage Created November 2021
- Planning Staff Attended Multiple Community Council Meetings



SMALL AREA PLAN KEY CONCEPTS

THE “BIG MOVES”

- Create a Ballpark Neighborhood Transit Supportive Zone.
- Reconfigure TRAX station to an “urban” neighborhood integrated design.
- Improve 1300 South for pedestrians
- “Festival Street” on West Temple
- Repurpose parking lots to add activity
- Balance density with livability

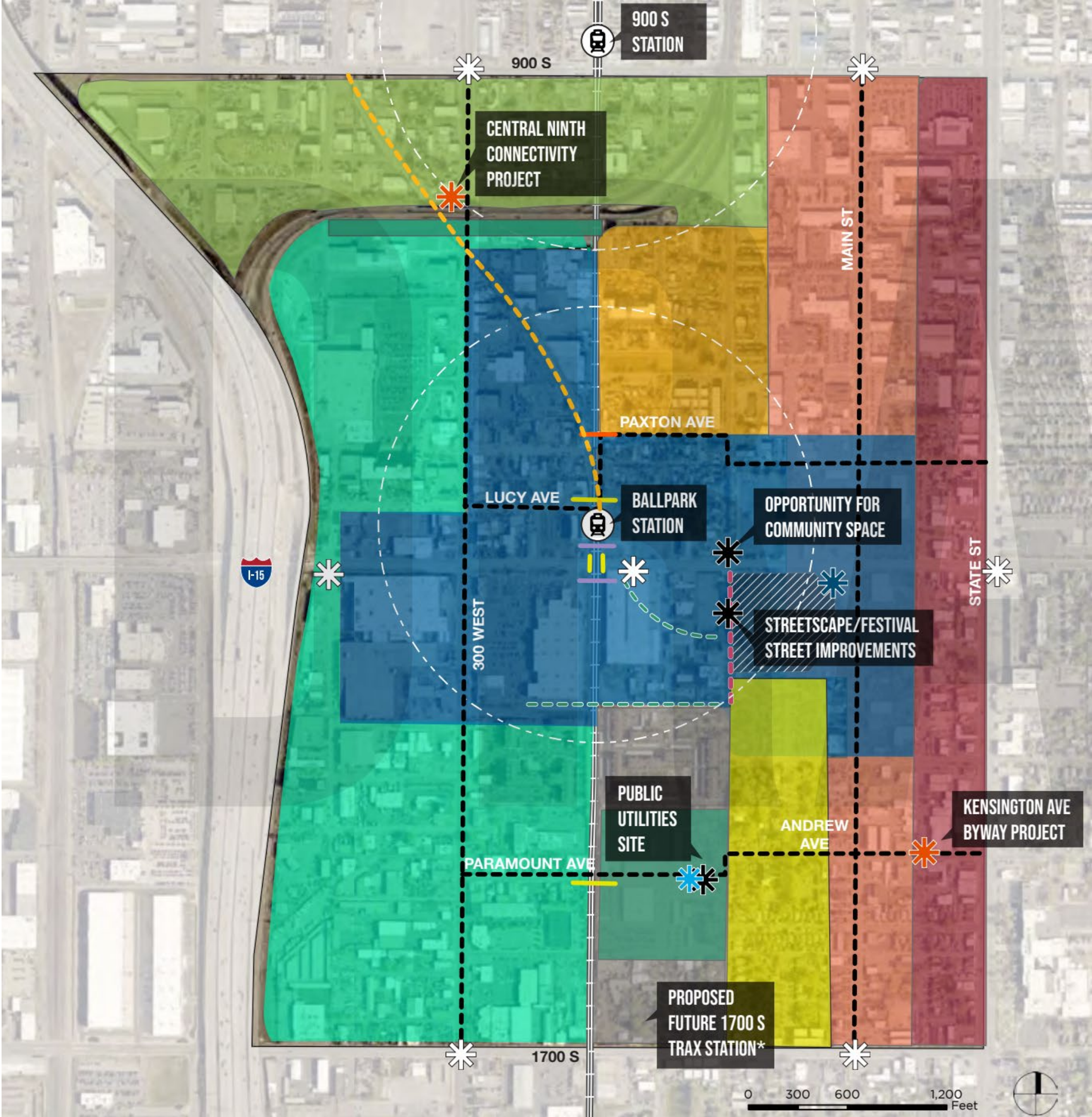


GOALS, STRATEGIES, ACTIONS

- Connectivity
- Safer Bike and Pedestrian Network
- Address Parking Needs
- Alleyway Safety
- Enhance Neighborhood Greenspace
- Housing Opportunity and Displacement Mitigation
- Improve Safety & Security

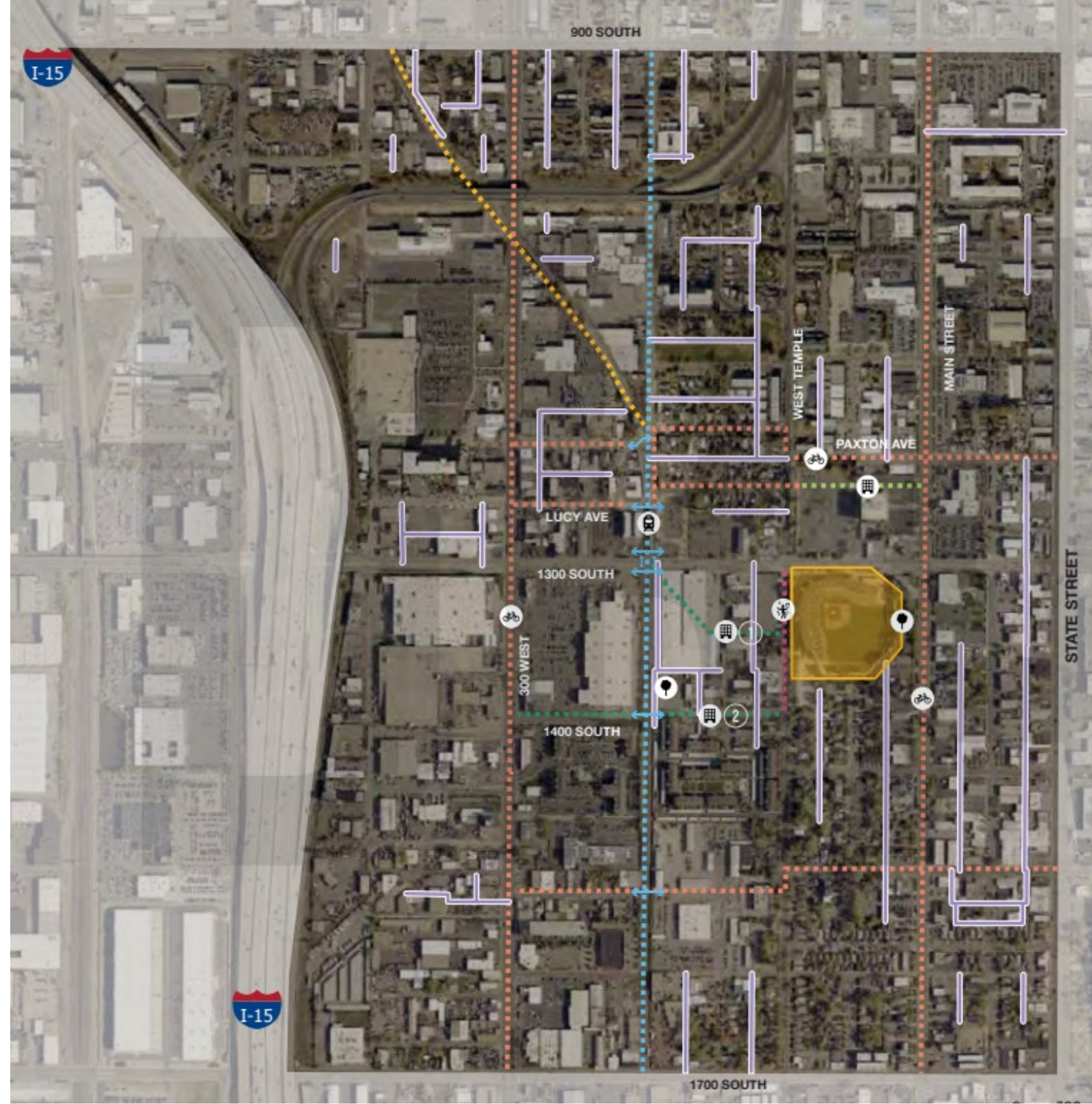


FUTURE LAND USE MAP



TRANSPORTATION

- Widening sidewalks
- Prioritizing heavily used corridors
- Bike routes on major streets (300 W, Main St)
- East/West bike routes (Paxton Ave, Kensington and Andrew Aves)
- TRAX pedestrian connection at Lucy Ave



“FESTIVAL STREET”

- On West Temple Street
 - From 1300 S to Albermarle Ave
- Create community gathering space on game or nongame day events





NEXT STEPS

TIMELINE

- December 2021 Through July 2022
 - initial public review comments and subsequent modifications.
- July 27th, 2022
 - Planning Commission review, modifications, public hearing, and possible recommendation.
- Summer Through Fall 2022
 - City Council review, modifications, and possible adoption.

Nan Larsen, Senior Planner

