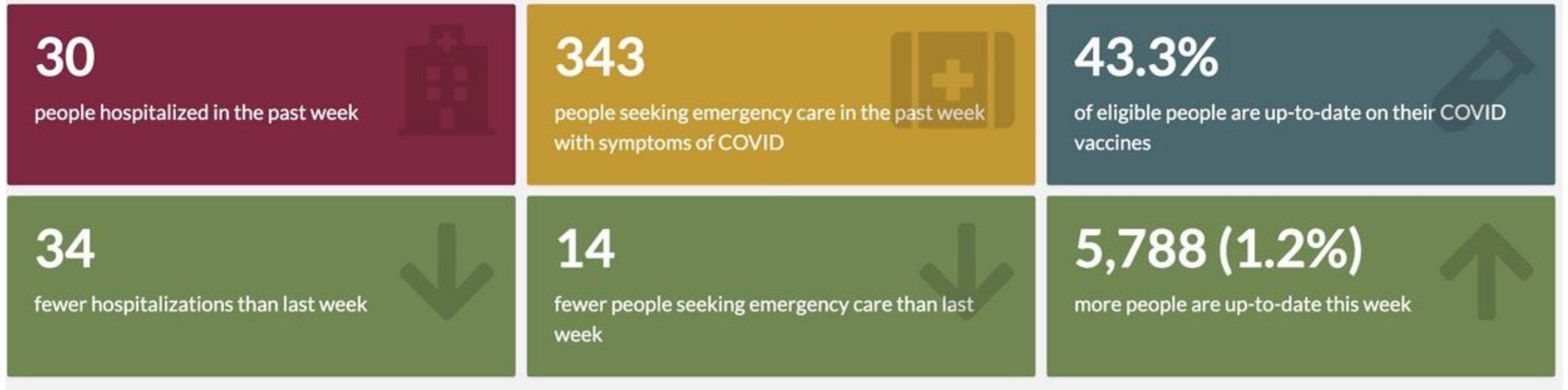


# Administrative updates

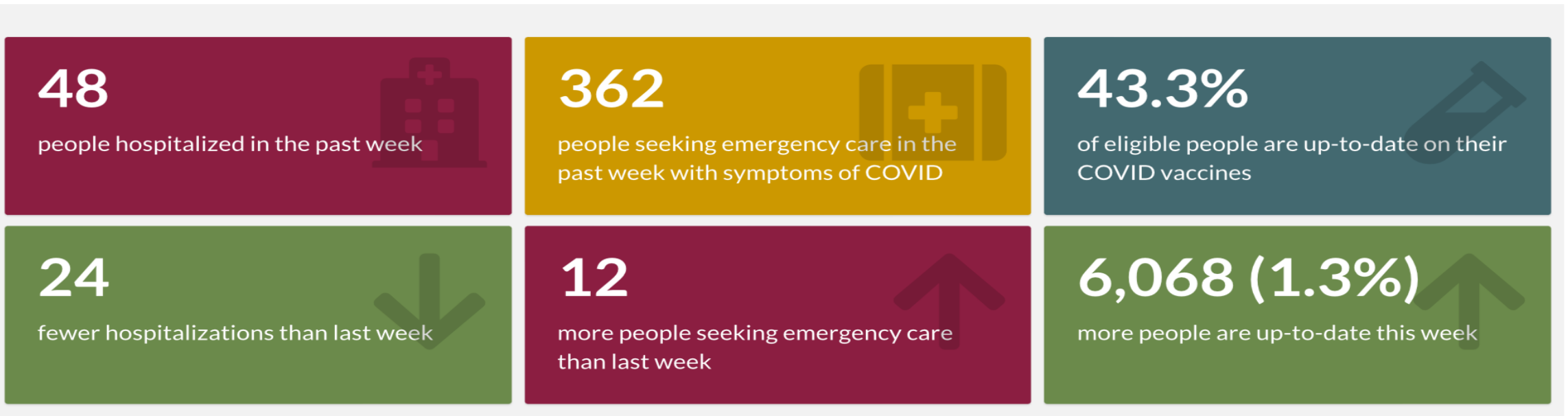
June 14, 2022



## Last week



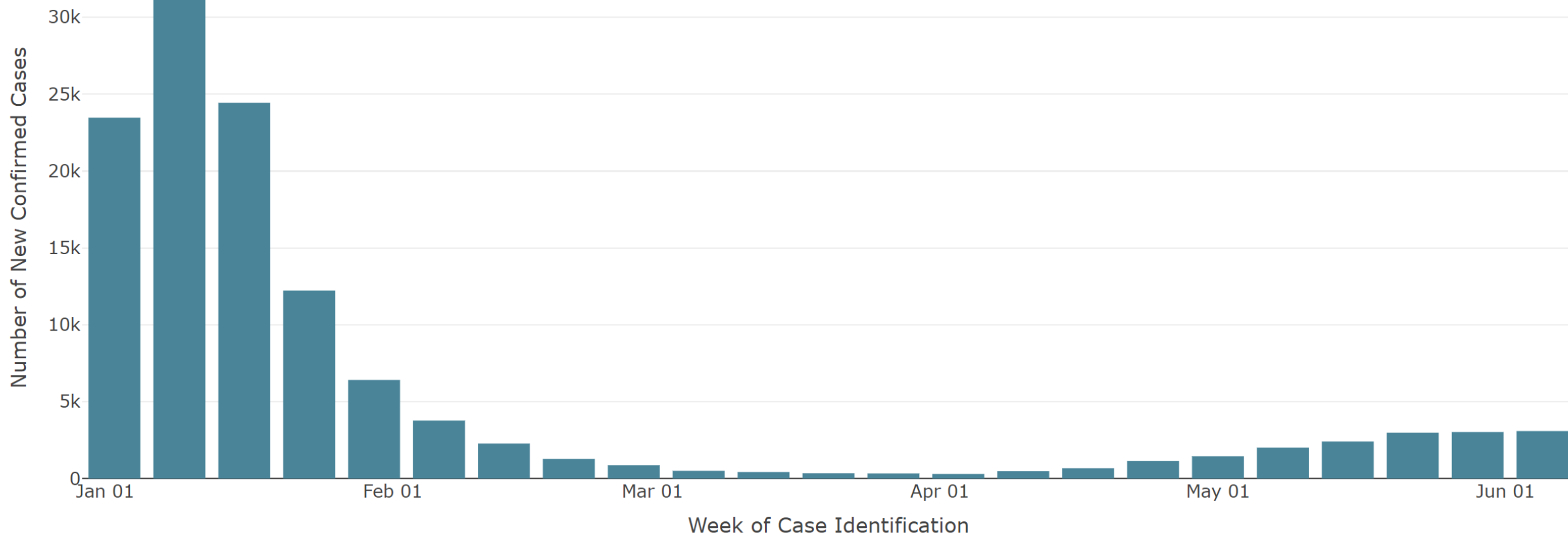
## This week



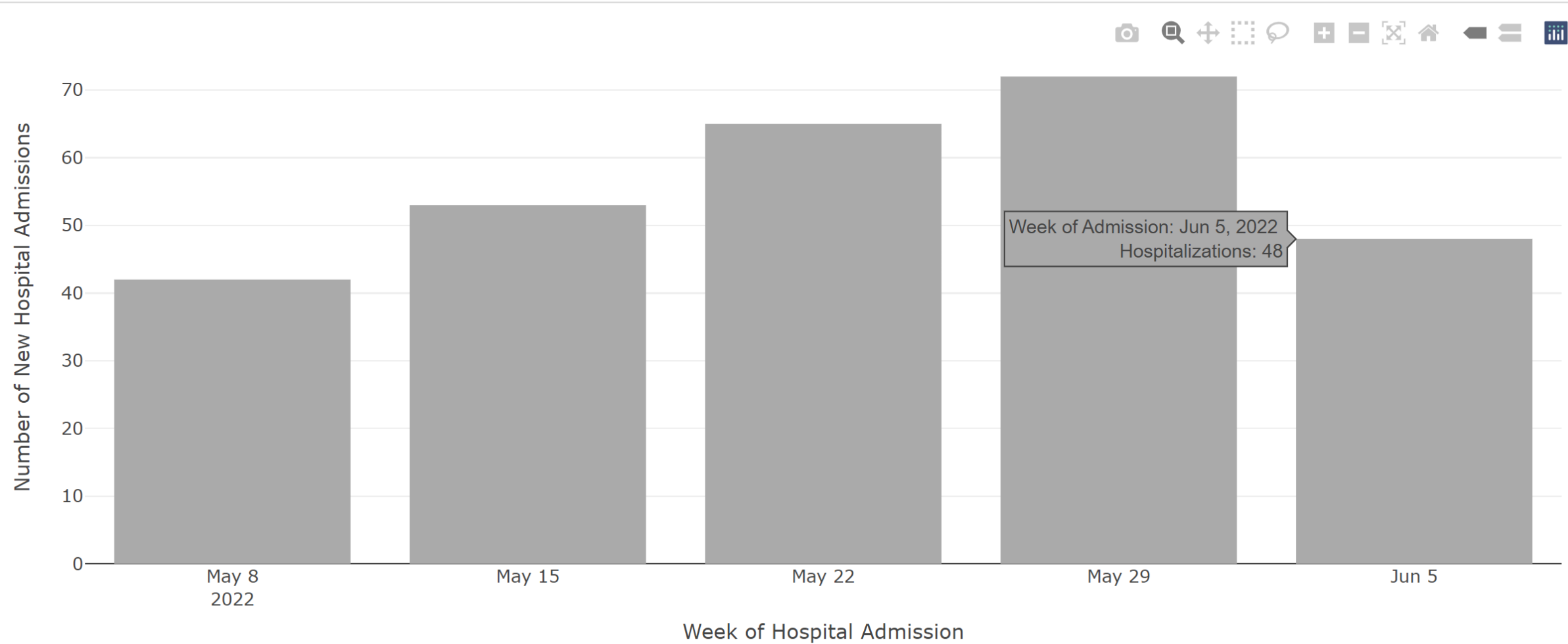
Case Counts by Week: All

Year to Date

Past 3 Months



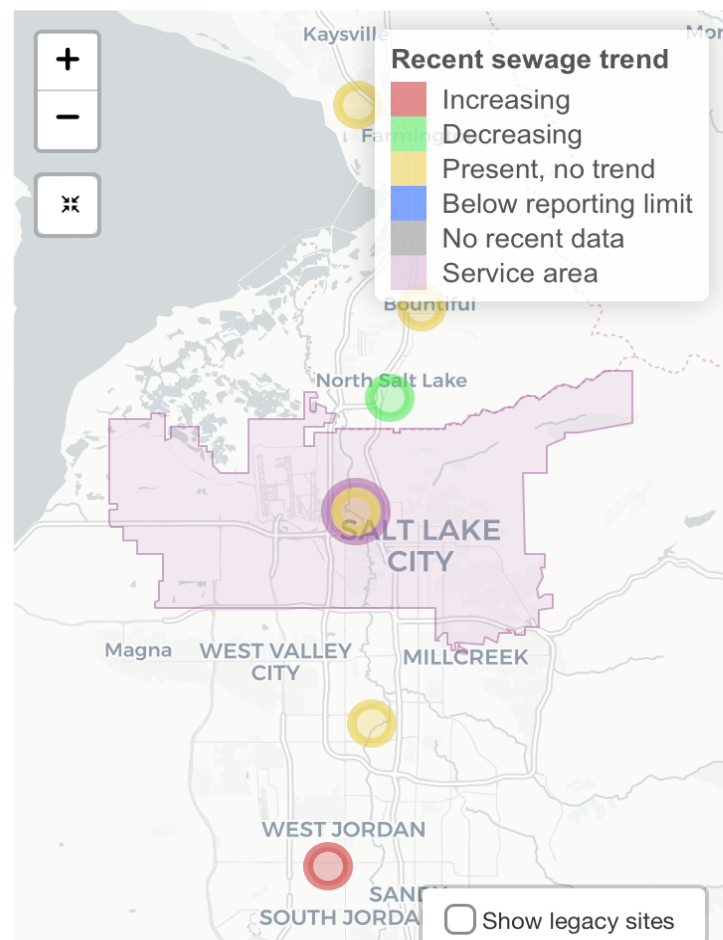
Hospitalizations in the past month



# Salt Lake City WRF

Estimated population served: 209,645

Click a location to display data



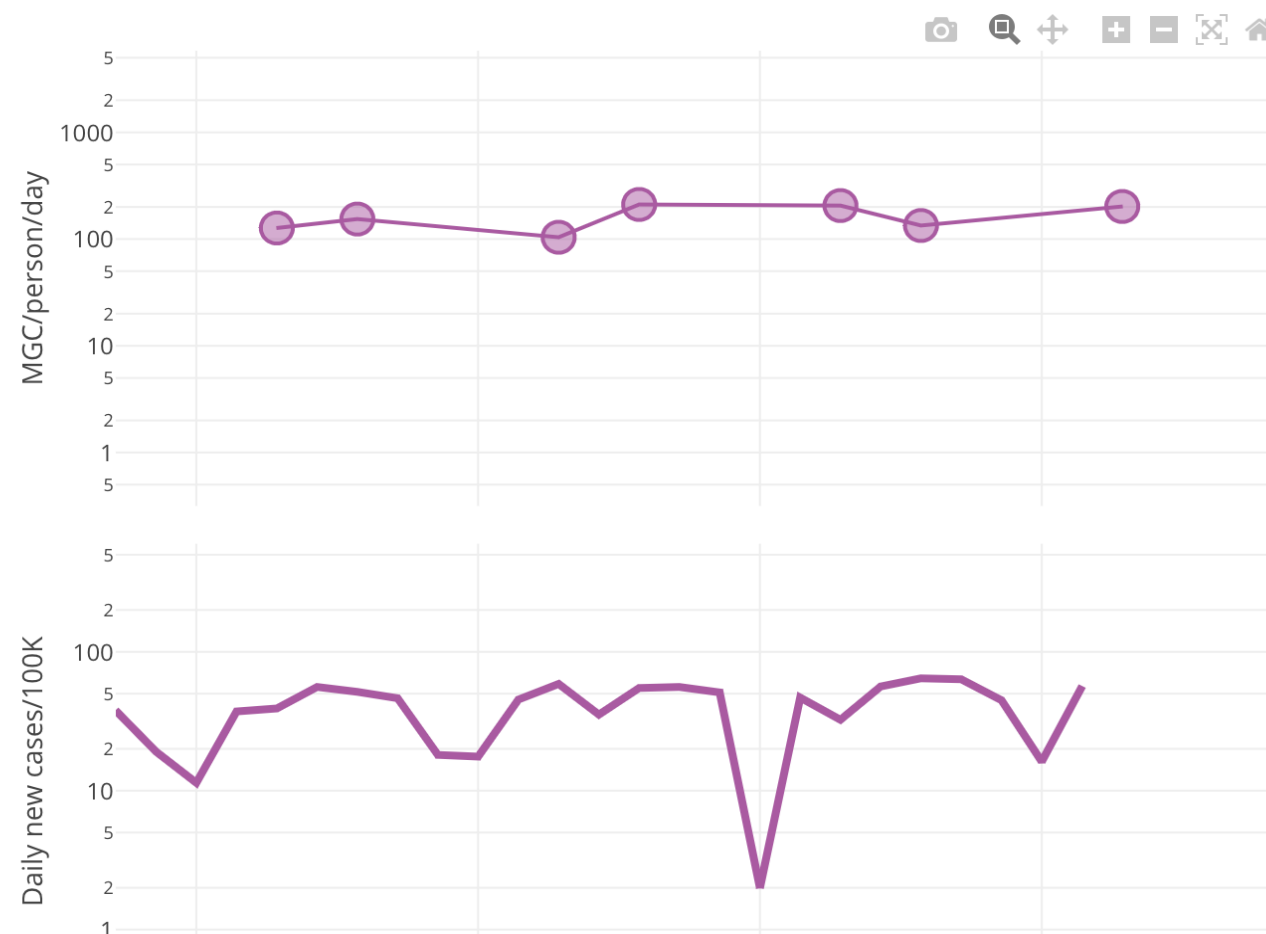
**Monitoring results and case counts** Sewage non-detections plotted at 1. MGC = million gene copies. Sewersheds with 1-5 cases plotted at rate of 2.

All data

Log y-axes



✓ Past month



# COVID-19 update

## Current status summary

---

According to the NYT, cases in Utah are up 34% in the past 14 days, with Utah as the 19th fastest-growing state for new cases. This is slightly worse than last week's report.

---

Community levels in Salt Lake County are considered moderate based on cases and hospitalizations.

Weekly Lawn Watering Guide  
For the week of: June 10, 2022 to June 16, 2022



# Weekly watering guide

<https://conservewater.utah.gov/weekly-lawn-watering-guide/>

Head Type	Precipitation Rate	Run Time for 0.5"	Cycle Recommendation
Spray Head	1.3" - 2.0"	23 - 15 min	3 cycles (8 or 5 min)
Rotor Head	0.4" - 1.0"	75 - 30 min	3 cycles (25 or 10 min)
MSMT Head	0.4" - 0.6"	75 - 50 min	3 cycles (25 or 17 min)

Each watering should apply ½” of water. To determine how long your stations should run to apply a ½”, we recommend getting a Water Check or doing a DIY water check.

Utah is still in drought! Check with your local water provider for recommendations and restrictions

# Homelessness Update:

## HRC and Overflow Occupancy

June 6 – 10, 2022

	STH - 1000 West Men's HRC	STH - King Women's HRC	STH - Miller Mixed HRC	Total
Shelter Capacity	300	200	200	700
Avg number of beds occupied/night	286	194	199	679
Avg number of beds unoccupied/night	14	6	1	21
Avg % of beds occupied/night	95.3%	97%	99.5%	97%
Avg % of beds unoccupied/night	4.7%	3%	0.5%	3%



# Community Commitment Program Enhancement

## Rapid Intervention Team

- 7 camps: targeted outreach and services + cleanings of camps and area
- Regular cleanings of other spaces and locations

## Abatements/ Cleaning

200 South Fisher Mansion area

# Homelessness Update

Contact/ Intake:  
801-990-9999

## Resource Fair:

Friday June 10th- Liberty Park

SLC Justice Court- 10 cases heard

Rescue Mission- 12 engagements

Utah Naloxone- 22 engagements

DWS- 7 benefits cases

Lunches- 100 hot lunches from Rose Park

Community Center Scholarship Students

## Kayak Court:

Friday June 17th- Jordan River