



SUSTAINABILITY

Budget FY 25 - 26

Presented by Debbie Lyons, Sophia Nicholas
and Chris Bell

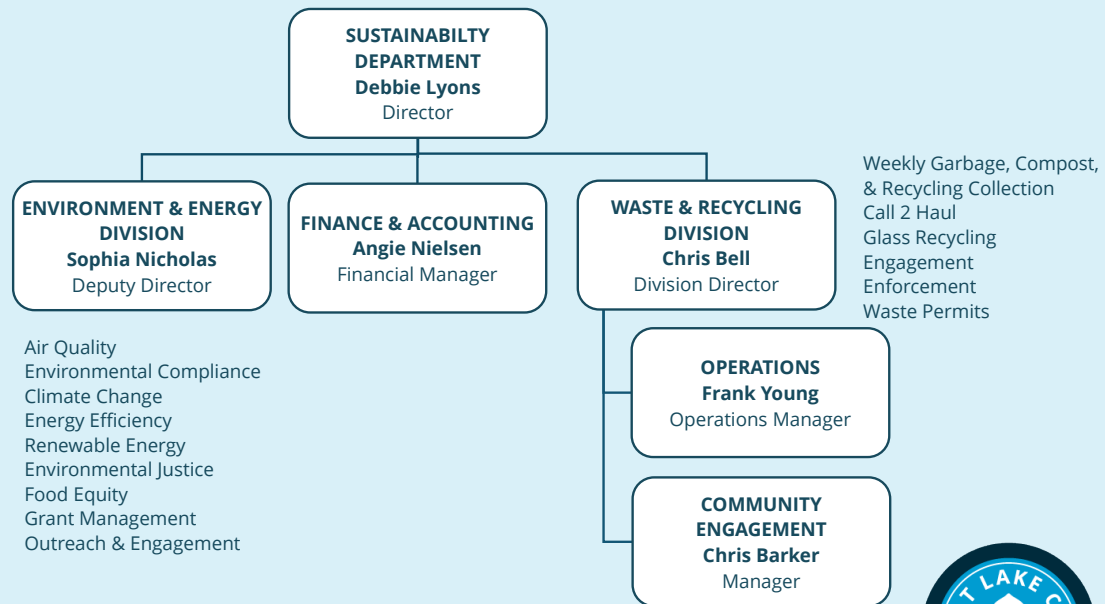


Organizational Chart

Full-Time Employees
65

Part-Time Employees
3

Seasonal Employees
8



Refuse Enterprise Fund Overview

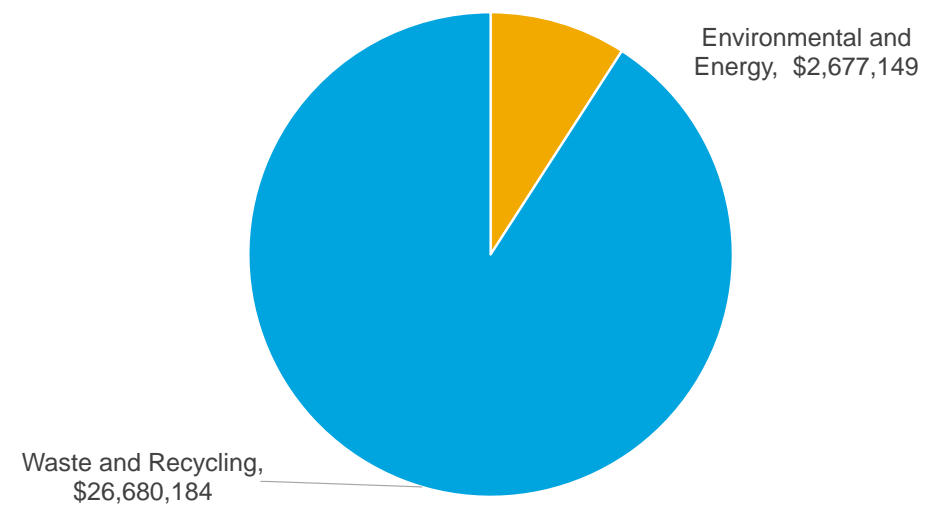
Department Summary	FY25 Adopted	FY26 Proposed Change	FY26 Total
Revenue	\$22,657,816	\$2,806,730	\$25,464,547
Expense	\$26,037,892	\$3,319,441	\$29,357,333
Personnel FT/PT	65/11	0/0	65/11

13% increase in Expense budget
Main drivers include:

- Inflation (including personal services)
- Fleet replacement
- Billing system upgrade



Refuse Enterprise Fund Expense by Division

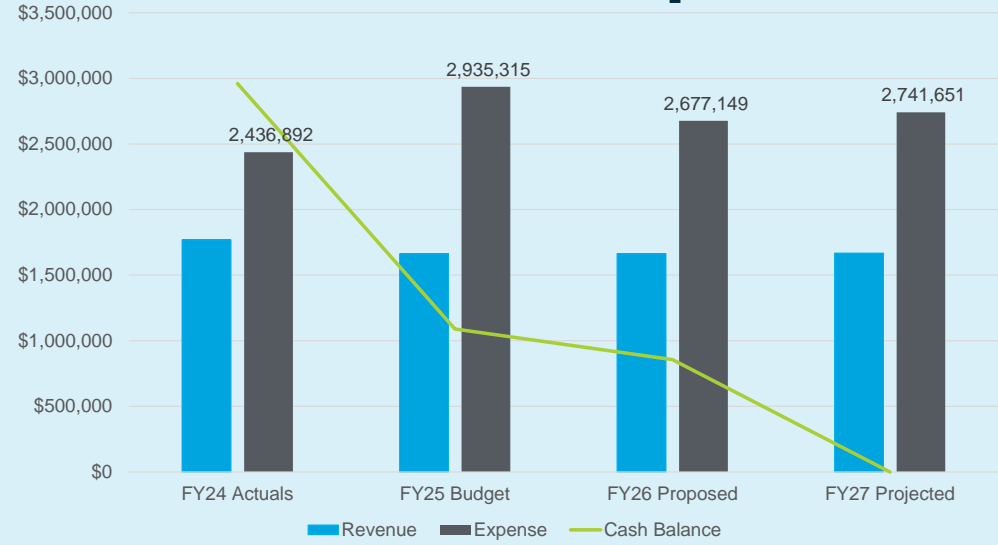


Department Insights and Key Changes

Insight	Description	\$ Change FY25 FY26	Type
1	Revenue: Waste and Recycling	\$2,806,730	Ongoing
2	Department Personal Services and Benefits	\$477,719	Ongoing
3	Department Inflationary	\$639,592	Ongoing
4	Waste and Recycling Fleet Purchases, Financing, Capital	\$1,581,737	Ongoing
5	Waste and Recycling Billing System Upgrade	\$760,745	One Time
6	Waste and Recycling Miscellaneous Operating and Admin	(\$140,352)	Ongoing
	Total Revenue Change	\$2,806,730	
	Total Expense Change	\$3,319,441	



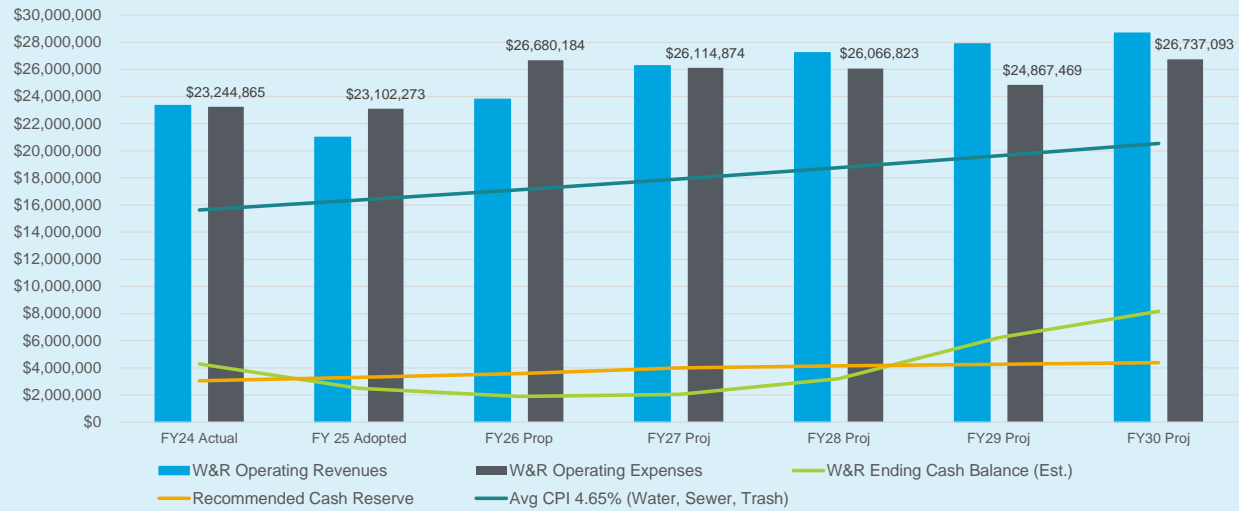
E&E Division Revenue and Expense Summary



Projected End of Year Cash Balance: \$856,835



W&R Division Revenue and Expense Summary



Projected End of Year Cash Balance: \$1,887,762 (10%) • Target 18%
Assumes Increases: 10% FY26 • 10% FY27 • 4% FY28 • 3% FY29+



W&R Residential Service Fees

Description	Current Monthly Fee	Proposed Monthly Fee	Monthly Impact	Annual Impact
90-gallon Garbage – Residential	\$33.20	\$36.52	\$3.32	\$39.84
60-gallon Garbage – Residential	\$27.95	\$30.75	\$2.80	\$33.60
40-gallon Garbage – Residential	\$21.90	\$24.09	\$2.19	\$26.28
Multi-Family 90-gallon Recycle (voluntary)	\$11.15	\$12.27	\$1.12	\$13.44
Curbside Glass Recycling (voluntary)*	\$8.24	\$8.49	\$.25	\$3.00

*Curbside Glass Recycling fee increase of 3% due to contractual increase, pass-through fee



W&R Division Revenue Budget Insight Detail

Description	\$ Change FY25 FY26	Type
W&R Curbside Fee Increase	\$1,684,297	Ongoing
W&R Capital Equipment Financing Budget neutral. Proceeds to finance capital equipment.	\$1,322,433	Ongoing
W&R Miscellaneous Revenue Projection adjusted based on anticipated vehicle sales.	(\$200,000)	One time
Total	\$2,806,730	

Projected End of Year Cash Balance: \$1,887,762 (10%)
Target Cash Balance: 18% of Operating Revenue





THANK YOU

Presented by:
Debbie Lyons, Department Director
Sophia Nicholas, Deputy Director
Chris Bell, Waste & Recycling Division Director