

# REDEVELOPMENT AGENCY OF SLC SUGAR HOUSE RDA PROPERTIES AND S-LINE UPDATE

---

RDA BOARD OF DIRECTORS MEETING – APRIL 16, 2024



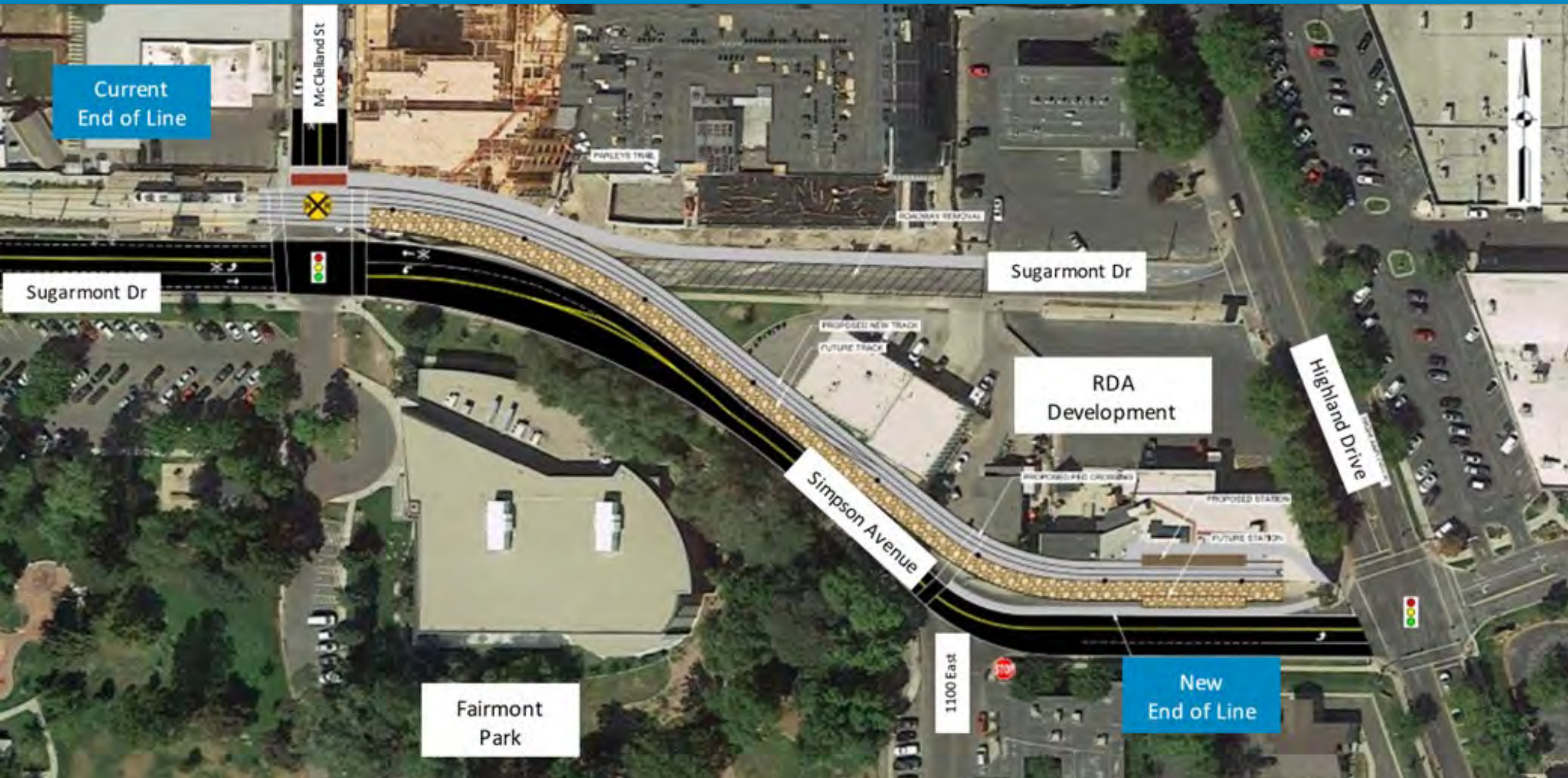
**SLCRDA**

# S-LINE EXTENSION – EXISTING CONDITION

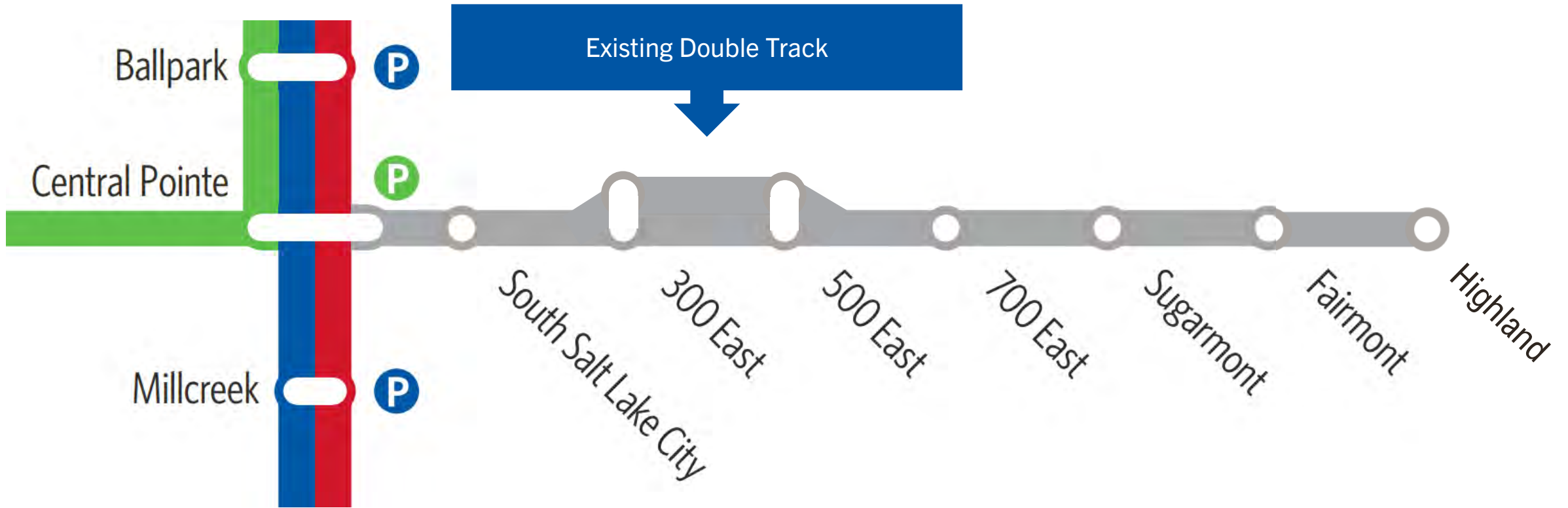




# S-LINE EXTENSION – PREFERRED ALIGNMENT

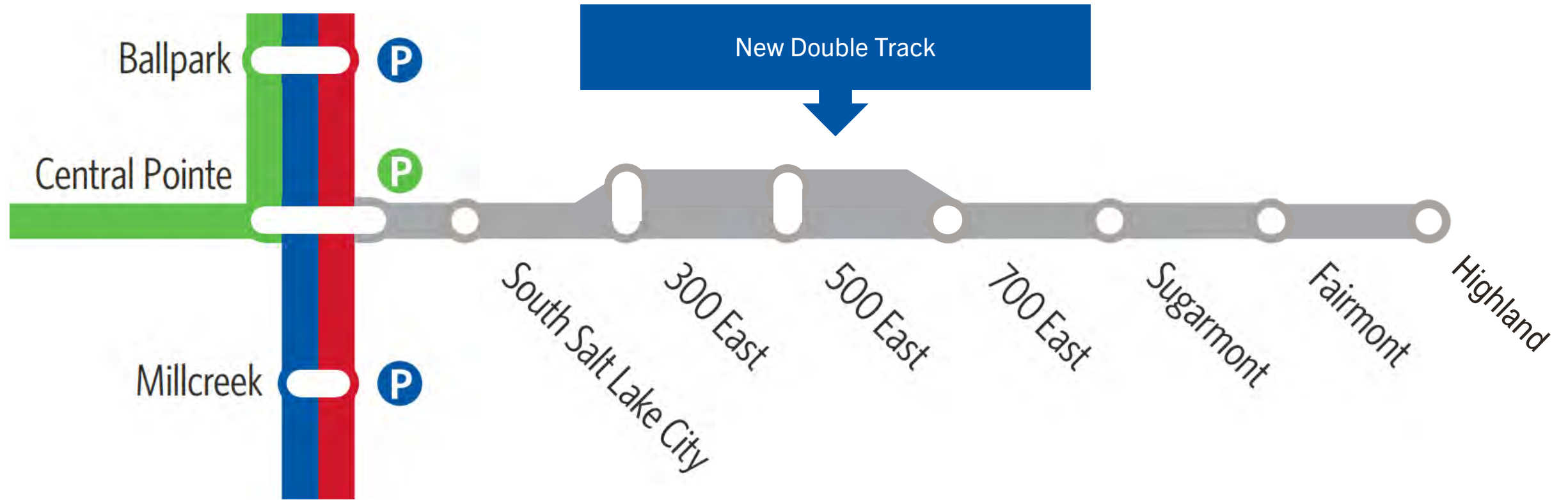


## EXISTING DOUBLE TRACK – 300 E TO 500 E





## NEW DOUBLE TRACK – 500 E TO 700 E



# SCHEDULE



## CONTACT US



[s-line@rideuta.com](mailto:s-line@rideuta.com)



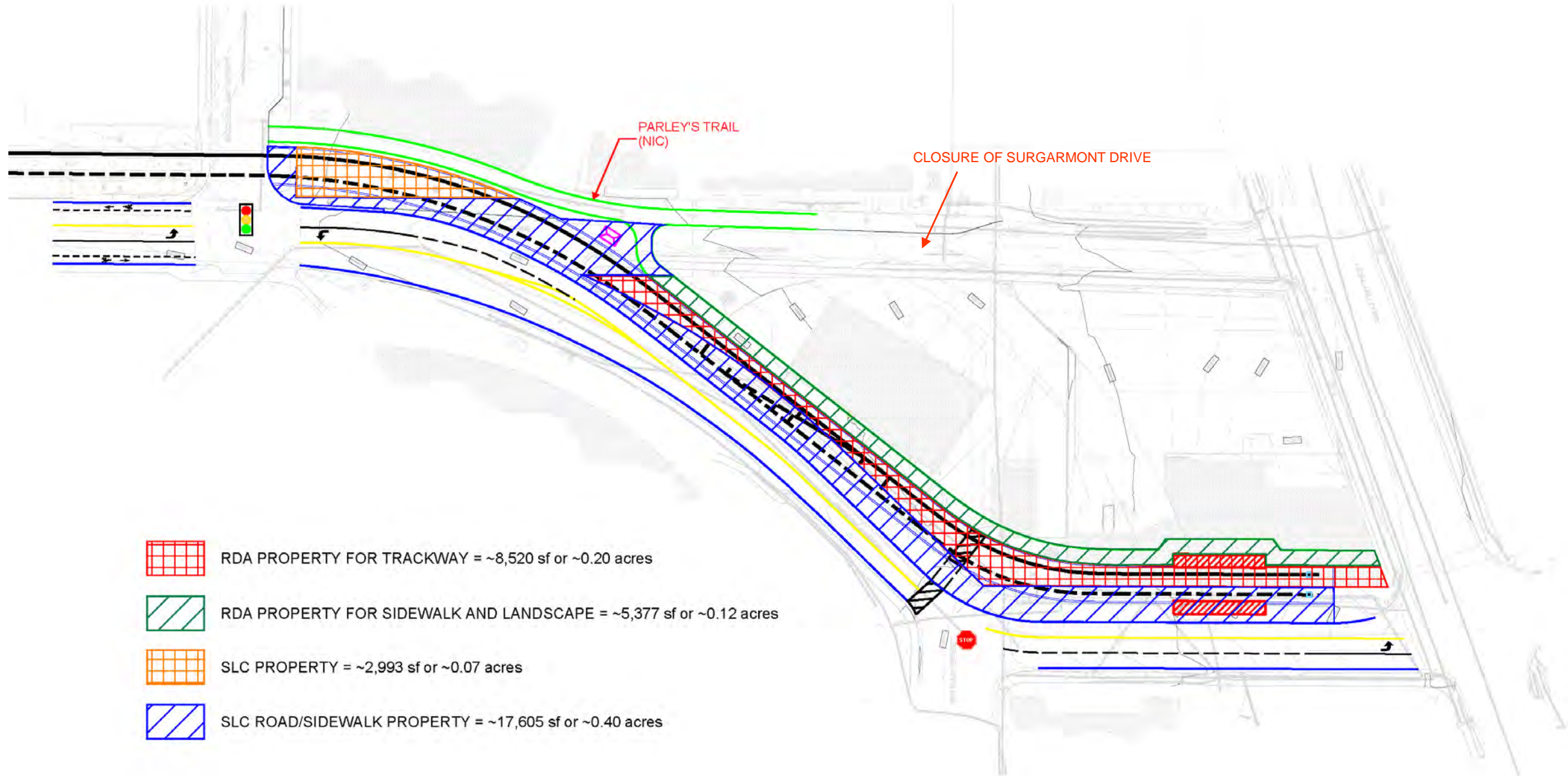
833-801-7433



[tinyurl.com/s-line](https://tinyurl.com/s-line)

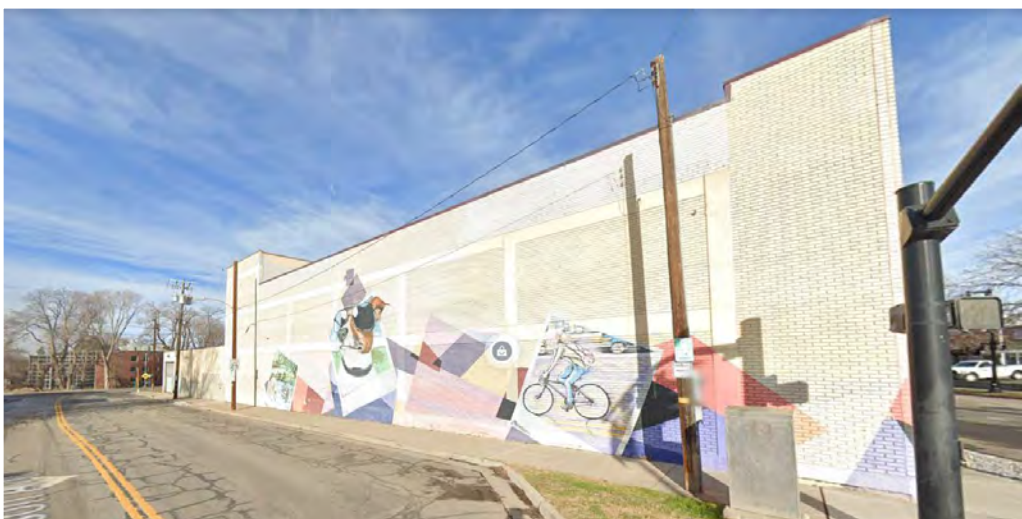


# PROPERTY IMPACTS





# RDA PROPERTIES





# RDA PROPERTIES



## Next Steps

- Demolition of buildings
- Public Services maintenance facility relocation
- Re-routing utilities
- RFP preparation
  - Mixed use - affordable housing focus
  - UTA request for restroom and break room
- RDA Staff may return to discuss any actions needed to comply with Real Disposition Policy