



SLCRDA



Ballpark Next

Urban Design Framework

Project Update to RDA Board of Directors ————— December 10, 2024

Perkins&Will

The Team



SLCRDA

Perkins&Will

Urban Design and Architecture

Kimley»Horn
Expect More. Experience Better.

Structural, Civil, and
Transportation Engineering



**DAVID EVANS
AND ASSOCIATES INC.**

Public Involvement

VICTUS
ADVISORS

Public Assembly
Economists

Project Timeline



Project Purpose

To bring the **community's vision to life** through an aspirational, context sensitive, human-centered urban design framework.

The Vision

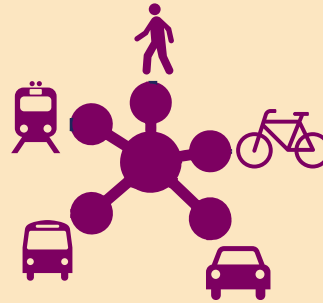
The future Ballpark Site is an iconic, exciting destination for the neighborhood, city, and region.

It is a catalyst for the transformation of our neighborhood, attracting people and development that uplifts and celebrates the area and its residents.

The Guiding Principles



Neighborhood Safety and Activation
Safety in Every Stride



Connectivity
Interwoven



Natural Geography
Be Green



Wellness
Culture of Health

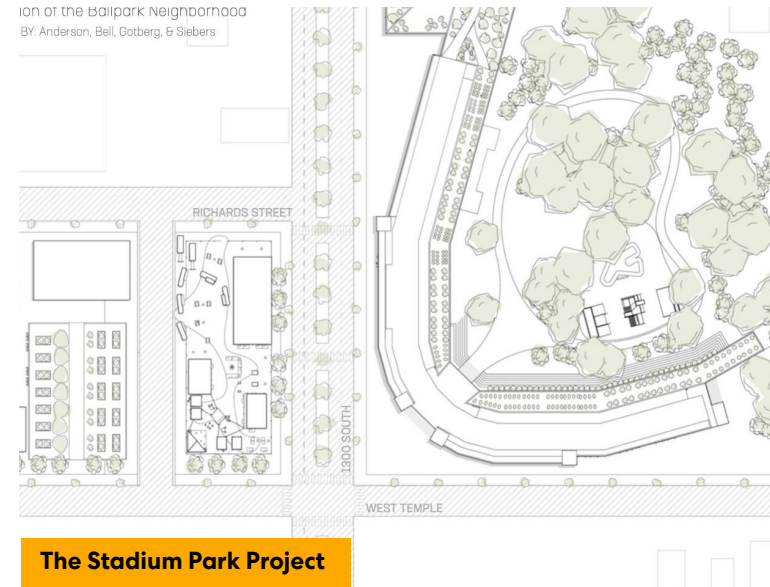
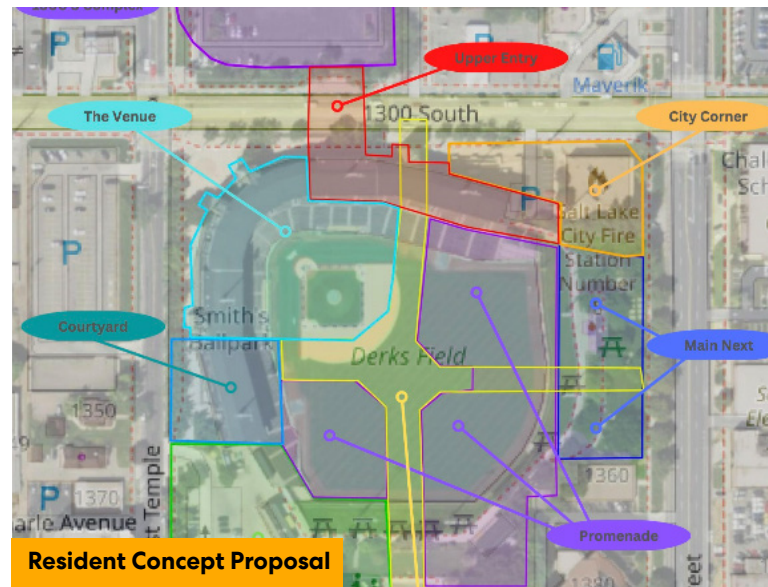
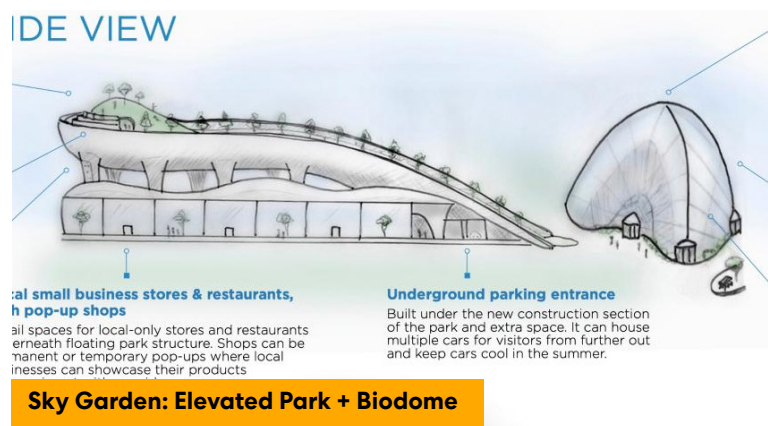


Community Centered
A Space for Every Face



Acknowledge the Past
Honor the Neighborhood's History

Building on Community Voices and Aspirations



Stakeholder Ideation Session 1

August 26th, 2024



Social Determinants of Health Prioritization Exercise

Economic Development

Public Market and Food Hub



Ground Floor Local Businesses



Amenities for Residents



Education Access and Quality

Public Library



Outdoor Exploratorium



Arts and Cultural Workshops



Social Determinants of Health Prioritization Exercise

Healthcare Access and Quality

Produce Market



Fitness Center



Neighborhood and Built Environment

Wide Sidewalks and
Protected Bike Lanes



Neighborhood Square



Mixed-Use Development



Social Determinants of Health Prioritization Exercise

Social and Community Context

Outdoor Performance Stage



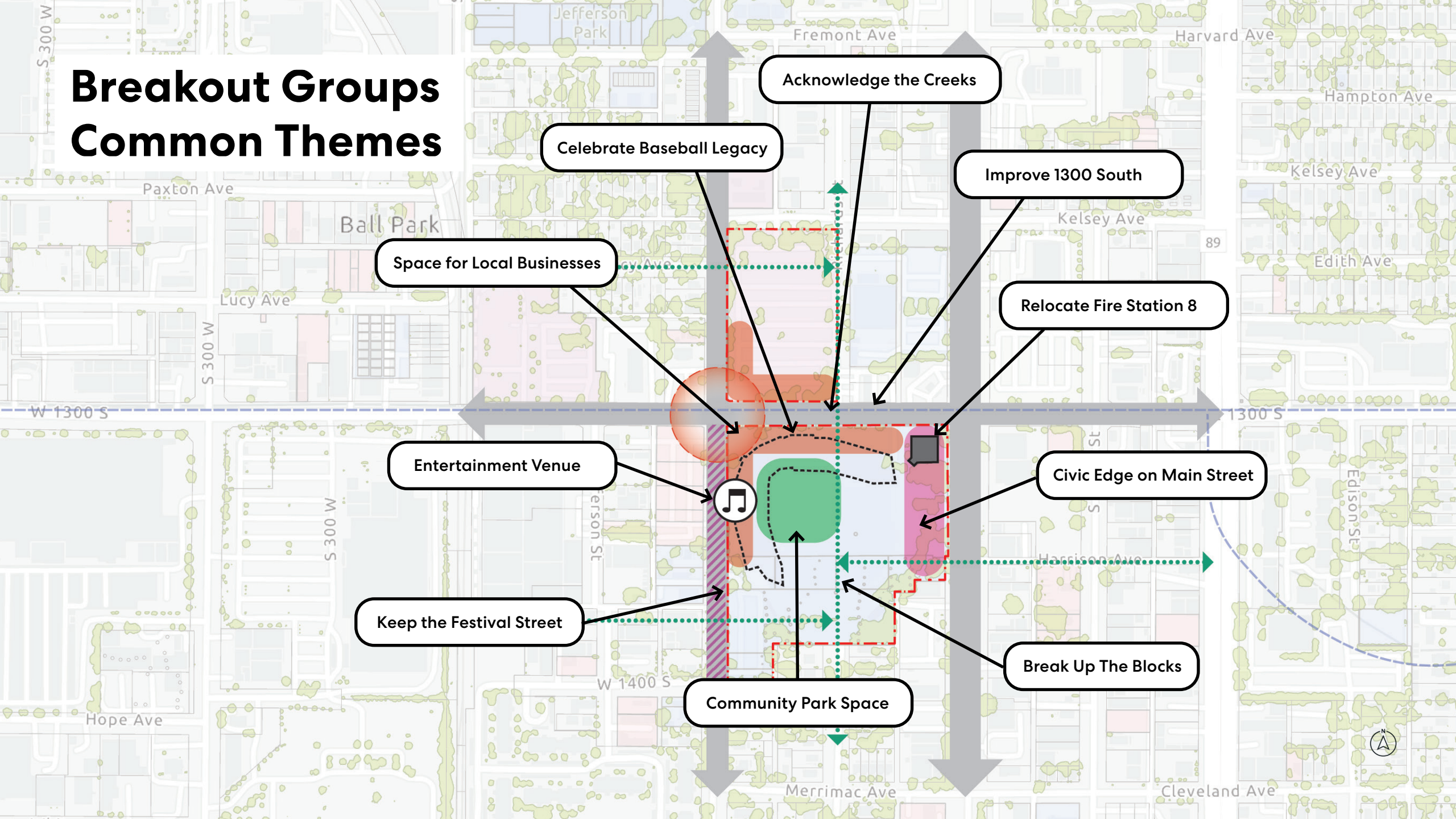
Community Gathering Space



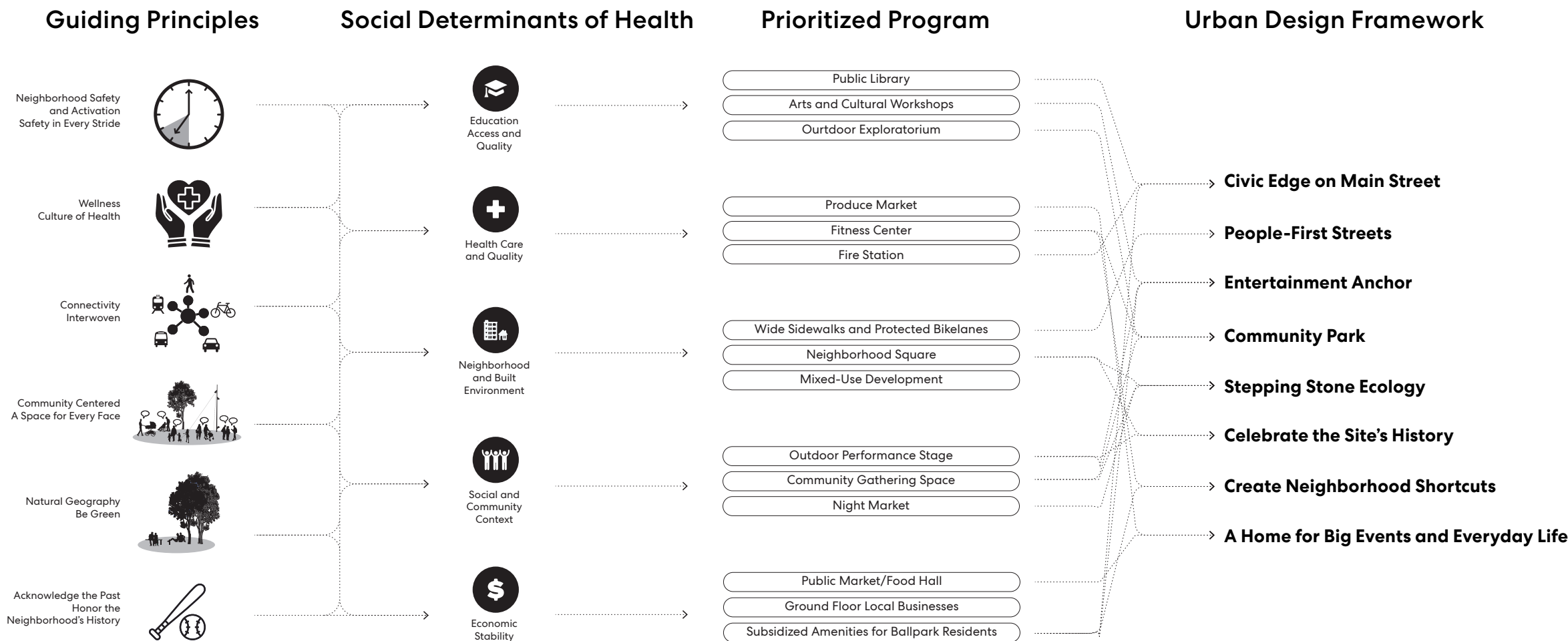
Night Market



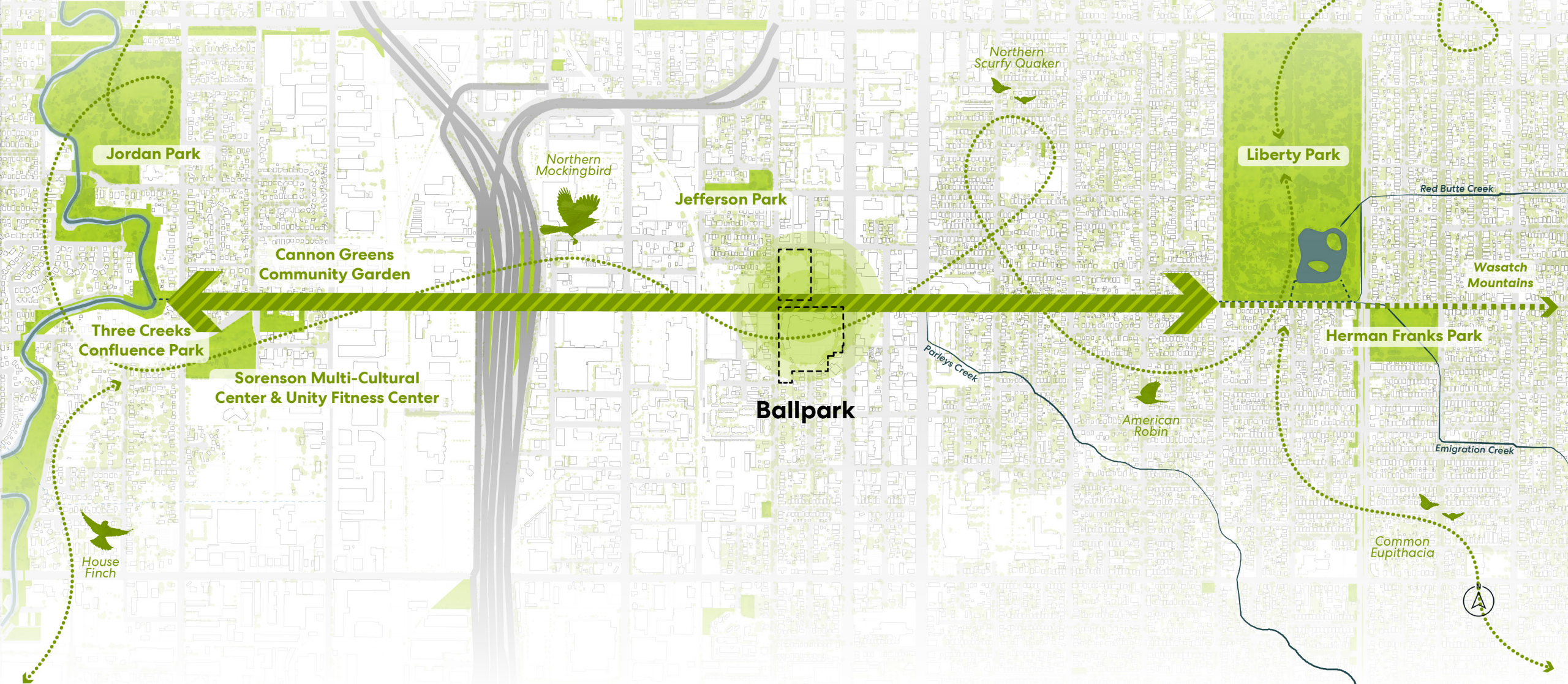
Breakout Groups Common Themes



Design Test Fits Concept Methodology



Stepping Stone Ecology Network

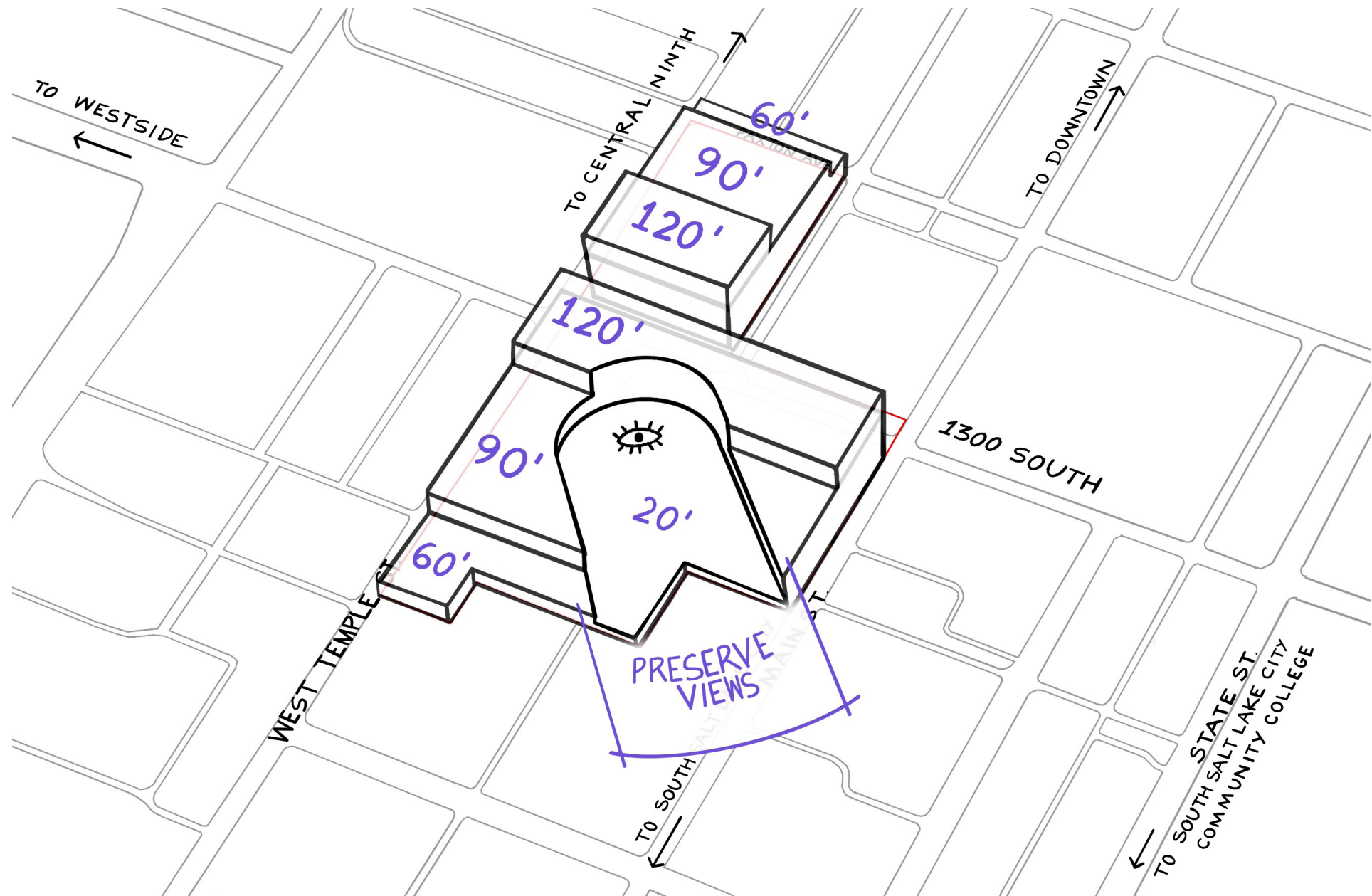


Neighborhood Short Cuts

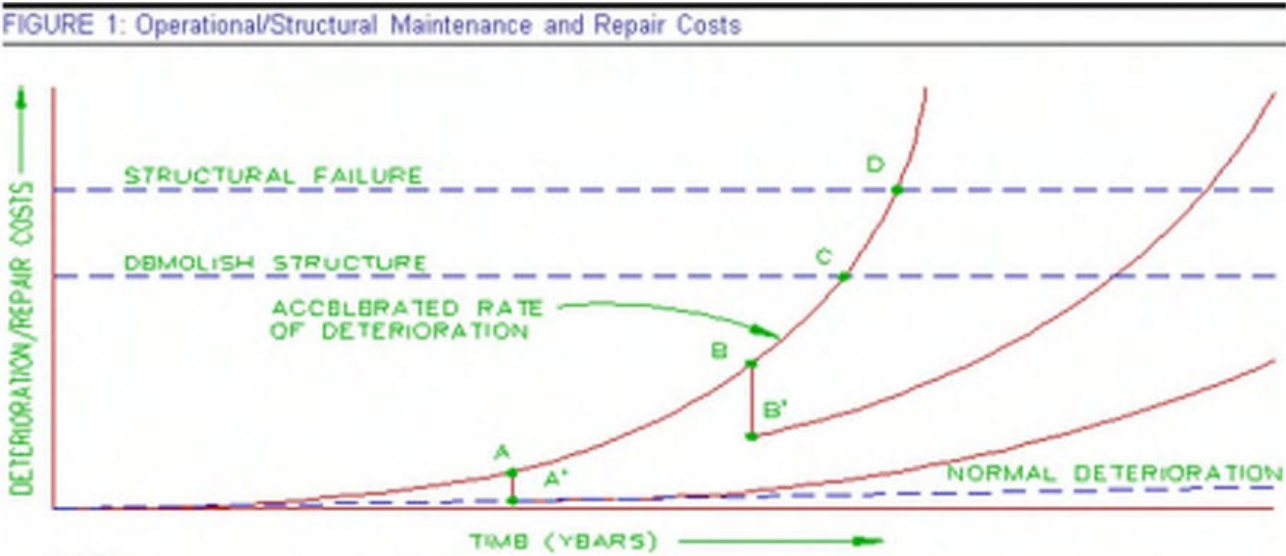
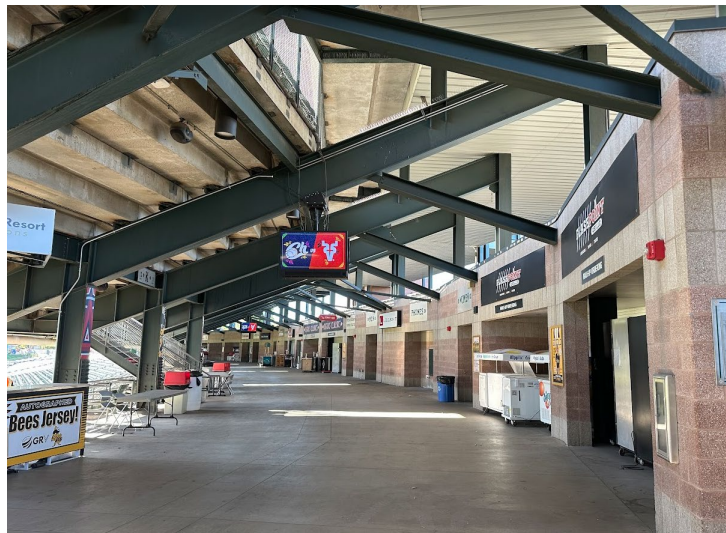
This map illustrates the Central 9th Neighborhood, highlighting proposed short cuts and key landmarks. A thick green arrow runs vertically through the center, indicating a primary corridor. A dashed green line runs horizontally across the middle, intersecting the vertical corridor. A dashed black line forms a rectangular loop around the central area. Key landmarks and locations are labeled: Jefferson Park at the top; Ballpark TRAX Station on the left; Walmart Supercenter and Lowe's on the far left; PUC Campus at the bottom left; West Temple Street at the bottom; Salt Lake Community College at the bottom right; and Bus Transit Stops on the right. Specific buildings are highlighted in orange: Horizonte Instruction and Training Center, Challenger School, and a building at the bottom right. Street names are labeled in green: Lucy Ave, 1300 South, 1400 South, and Harrison Ave. The map uses a color-coded system: yellow for residential areas, blue for commercial/retail areas, and green for parks and transit corridors. A north arrow is located in the bottom right corner.



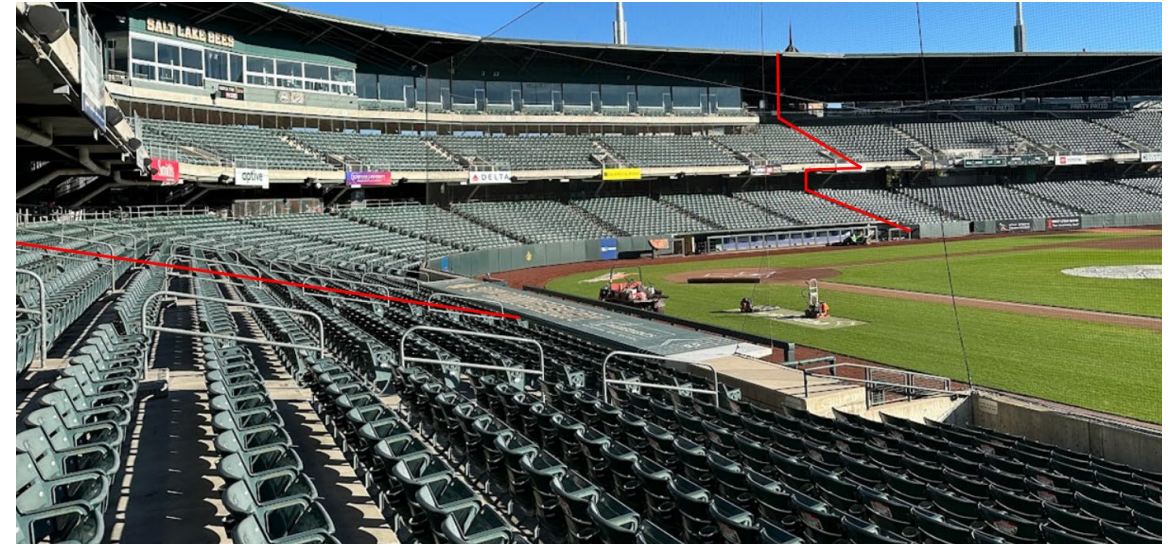
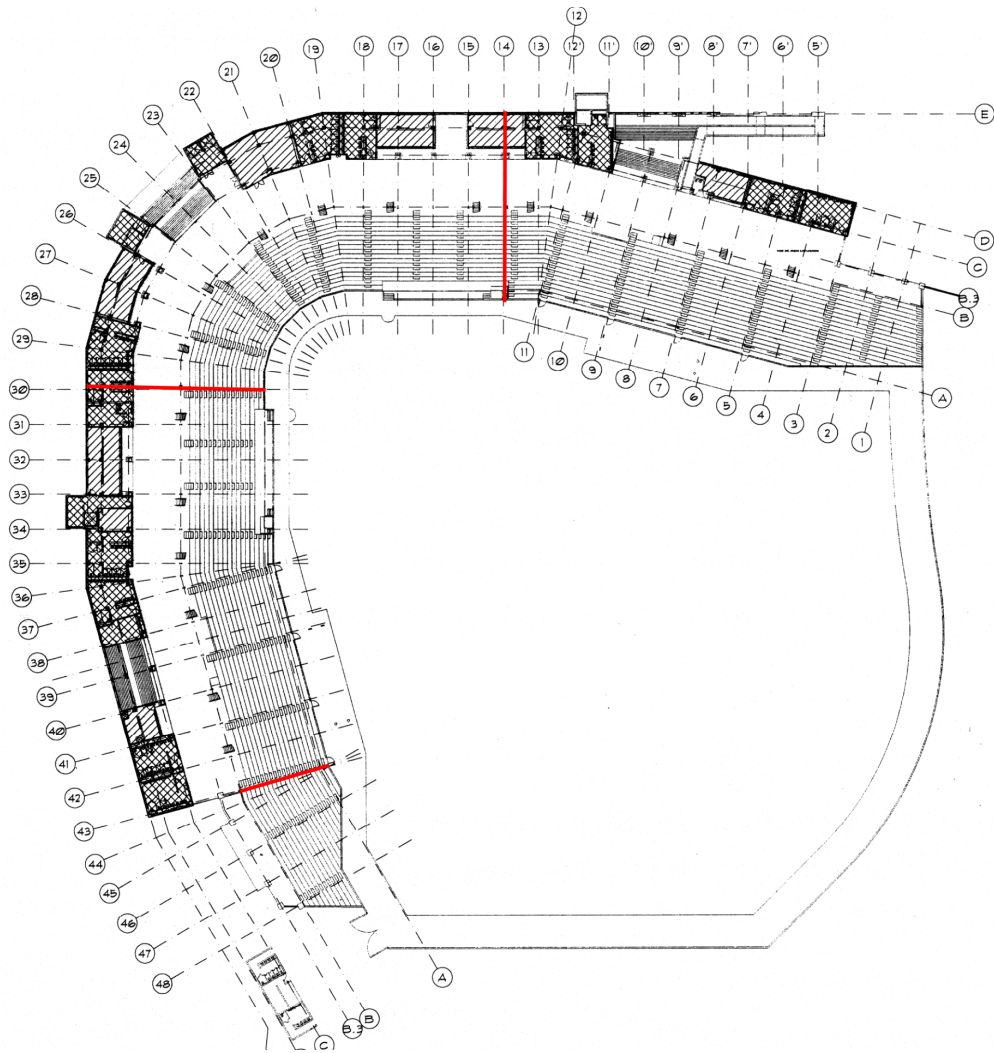
Height Envelopes



Remaining Service Life of the Structure



One Ballpark, Four Isolated Structures



Structural Framing System: cast-in-place concrete bearing walls and structural steel framing and columns with precast risers in the elevated seating area, composite steel deck on the second and third floors, and metal deck on steel trusses on the high roof.

Lateral Force Resisting System: Special concrete shear walls at the ground level, and special steel moment frames at elevated levels.

Non-Load Bearing Elements: Infill concrete masonry unit walls at the perimeter of the structure, select cast-in-place concrete walls at the ground level.

Cast-In-Place Concrete tunnels, ramps, main stairs are comprised of retaining walls.

A legendary site reimagined for the Ballpark's next chapter.

SCENARIO 1

Preserve

COMMUNITY
ANCHOR



Sports

SCENARIO 2

Adaptive Reuse



Culture

SCENARIO 3

Remove



Nature

SCENARIO 1

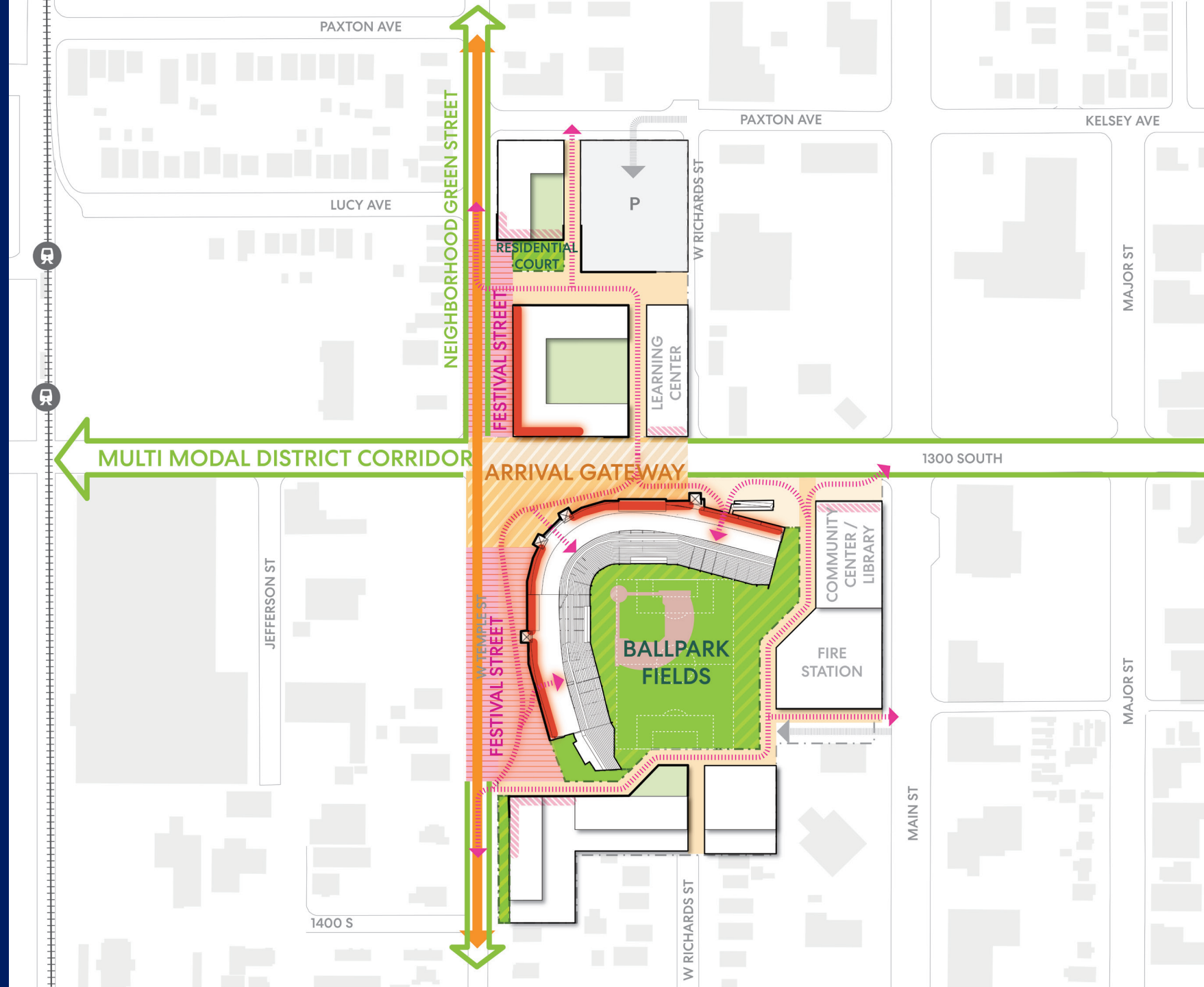
Sports as Community Anchor

Smith's Ballpark is a key part of Salt Lake City's sports scene, blending history with community spirit. By continuing to host varied sports events on the site, it can unite locals and boost pride.



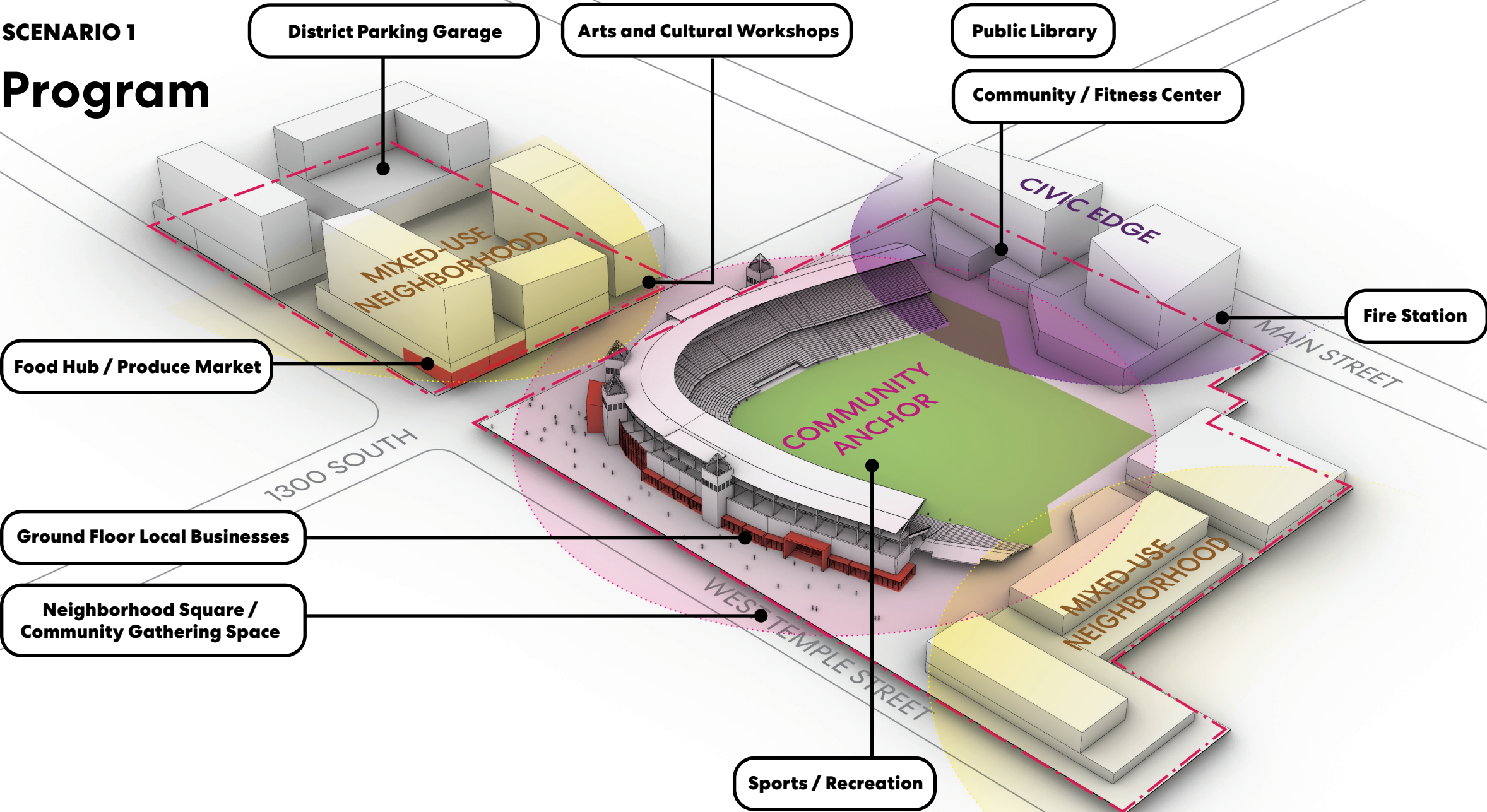
Preserve

Using the stadium as an anchor point for neighborhood activities, Scenario 1 activates West Temple as a place for community celebration.



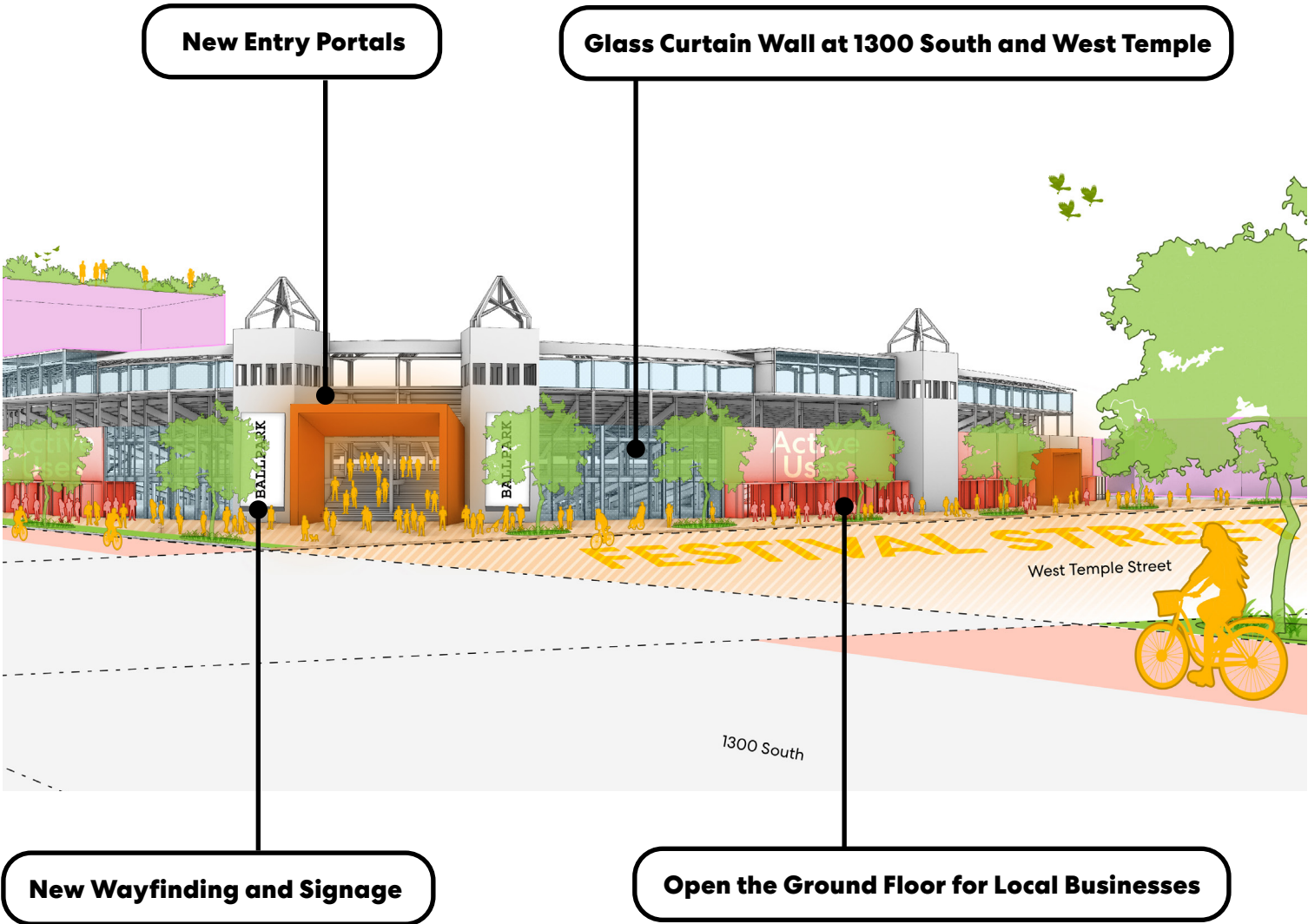
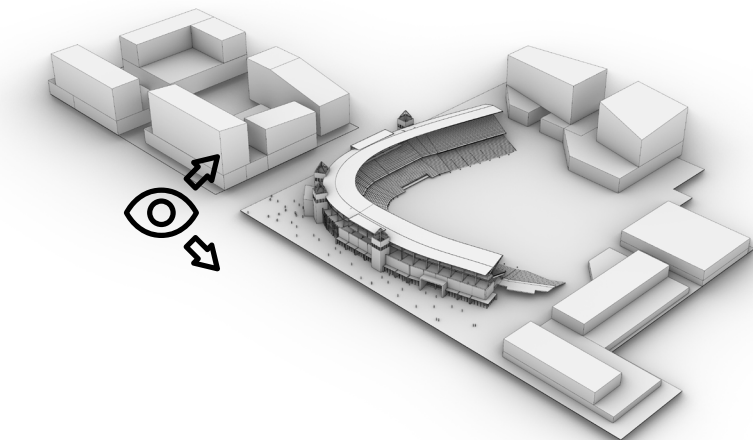
SCENARIO 1

Program



SCENARIO 1

The Ballpark



SCENARIO 1

Square 50

Washington, D.C.

- The project replaces an aging two story fire station.
- Program includes a new fire station, a squash club, and 55 units of housing above.



SCENARIO 2

Culture as Community Anchor

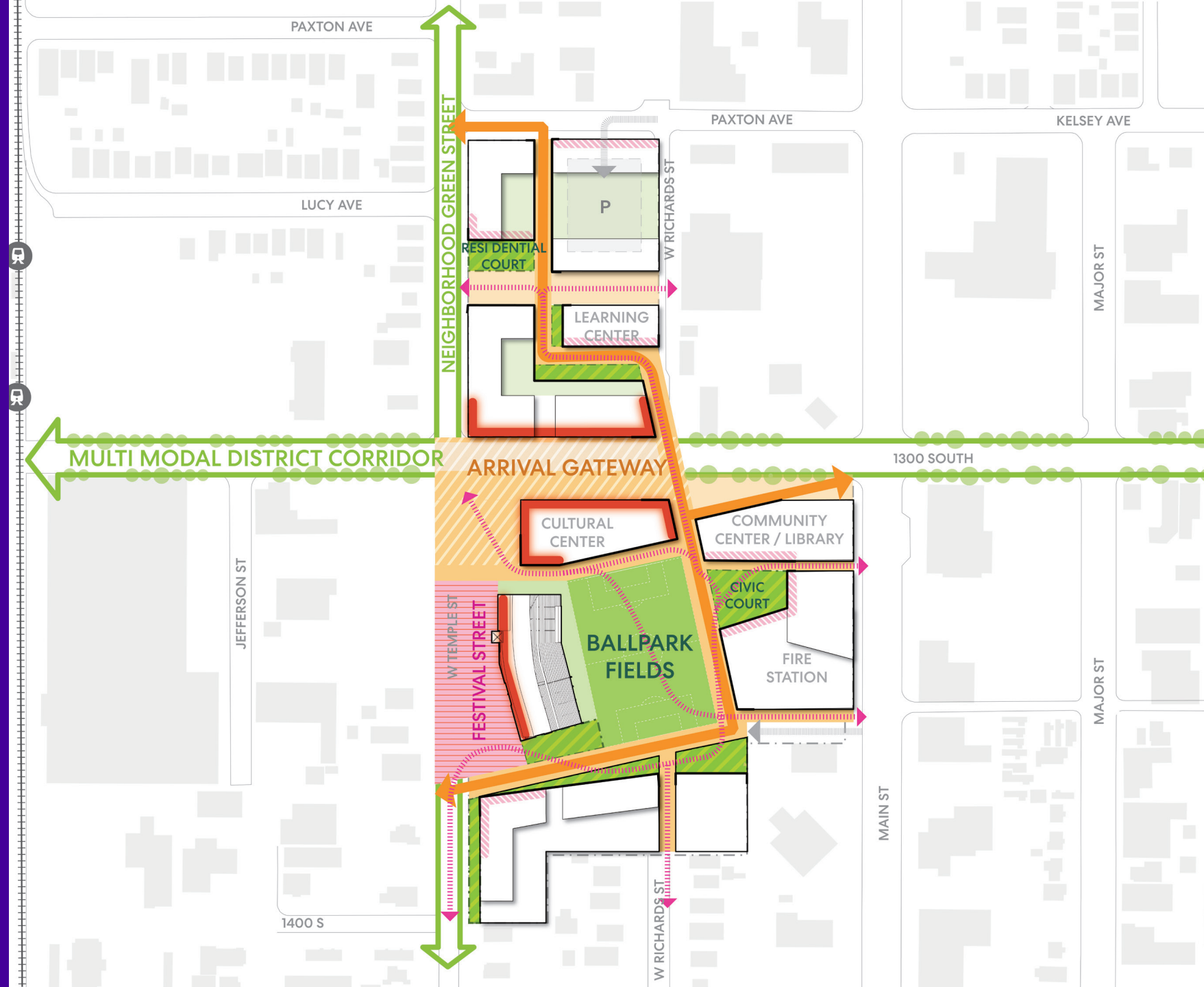
Culture is essential to Salt Lake City's identity. Hosting festivals, the arts, and performances will celebrate local diversity and make the site a cultural landmark that fosters inclusivity, honors the past, and enriches the neighborhood.



SCENARIO 2

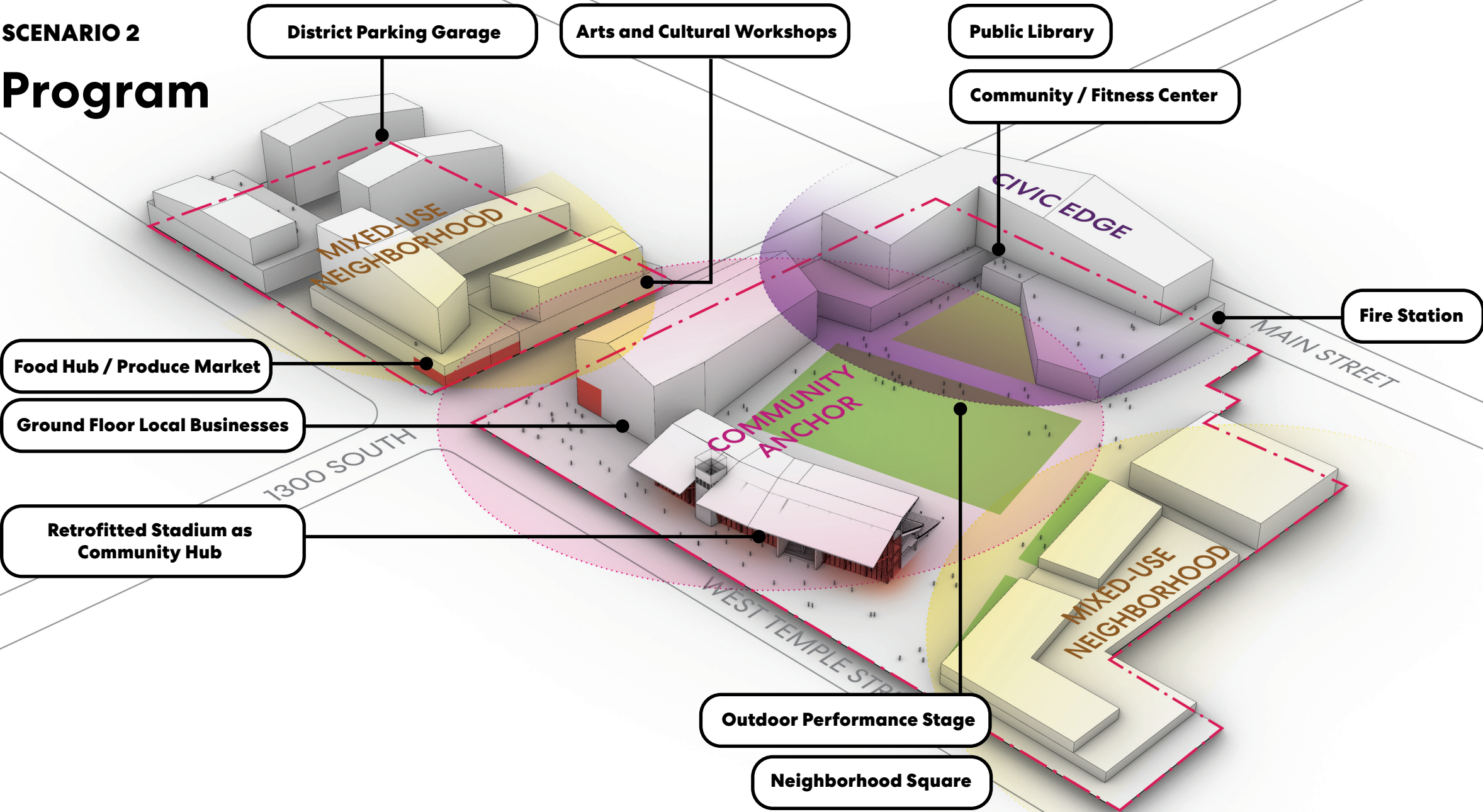
Adaptive Reuse

Scenario 2's focal point is the large central flexible green space, being a draw for night markets, concerts, little league, picnics, all the way to afternoon reading with a view of the Mountains. The western portion of the stadium has been preserved and revitalized to bring people together through dynamic activations and social engagements.



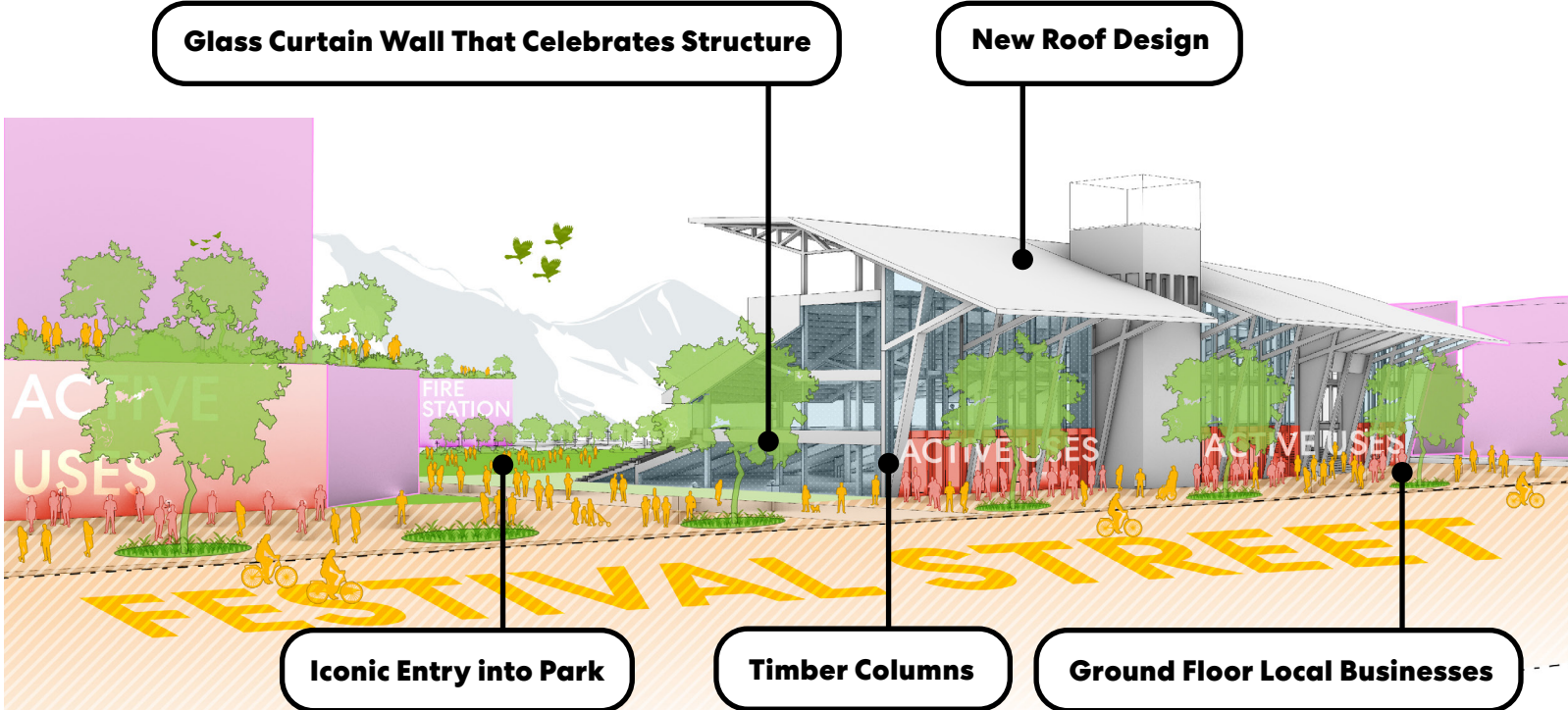
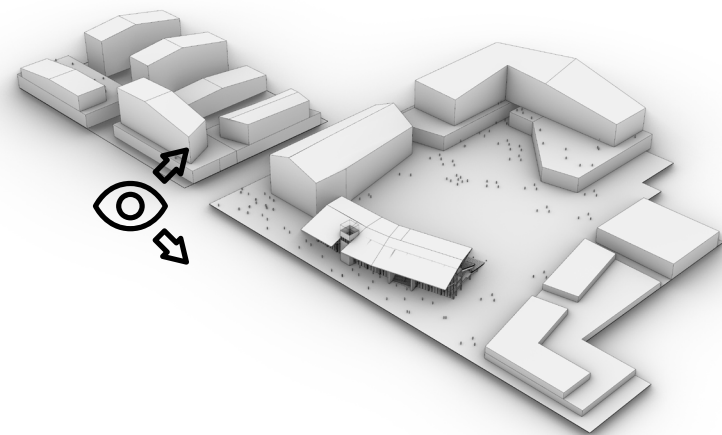
SCENARIO 2

Program



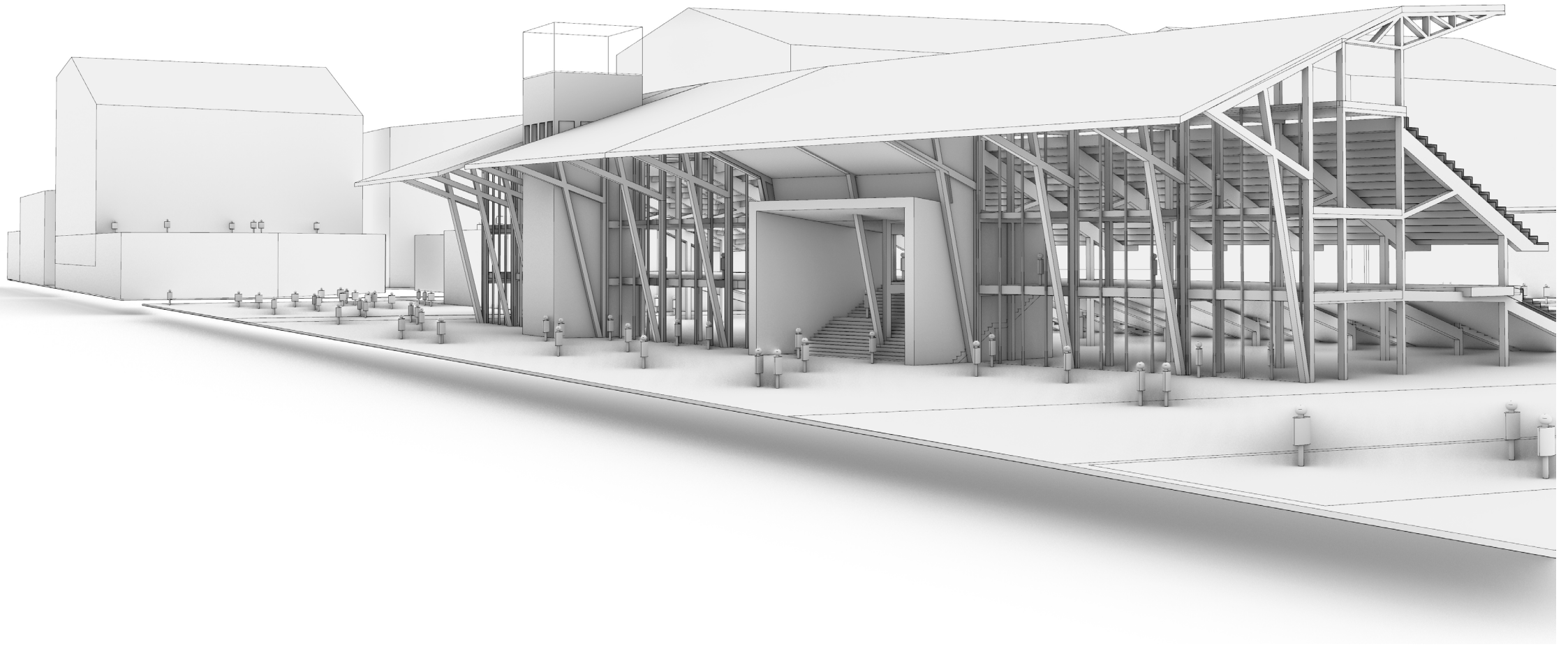
SCENARIO 2

The Ballpark



SCENARIO 2

The Ballpark



SCENARIO 2

Southwest Public Library

Washington, D.C.

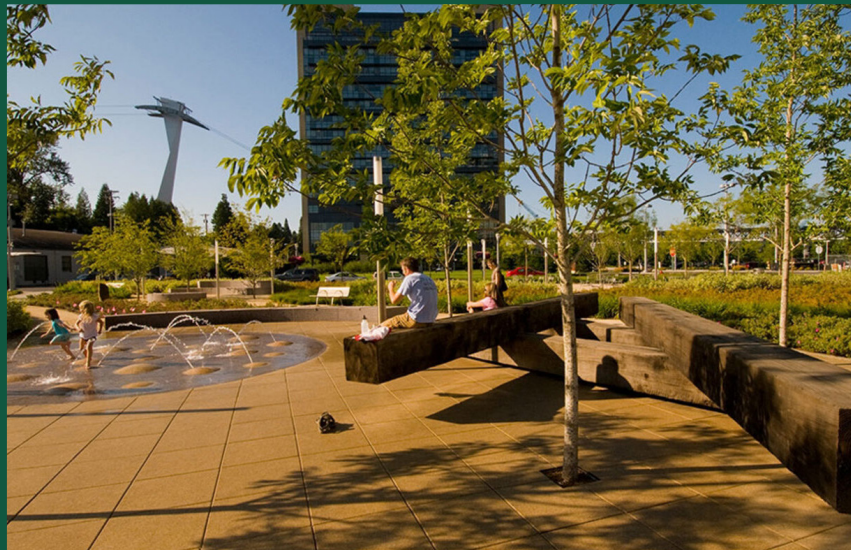
- The 25,000 sq.ft. project replaces the previous branch library.
- Key features include the dowel-laminated timber (DLT) columns and its floor-to-ceiling glass walls that blend indoors and outdoors to engage passersby with the library and its programs.



SCENARIO 3

Nature as Community Anchor

Salt Lake City thrives with nature. Activating green spaces, trails, and natural elements to the site boosts both beauty and sustainability. This offers a peaceful retreat, promotes outdoor fun, and connects the community to nature.

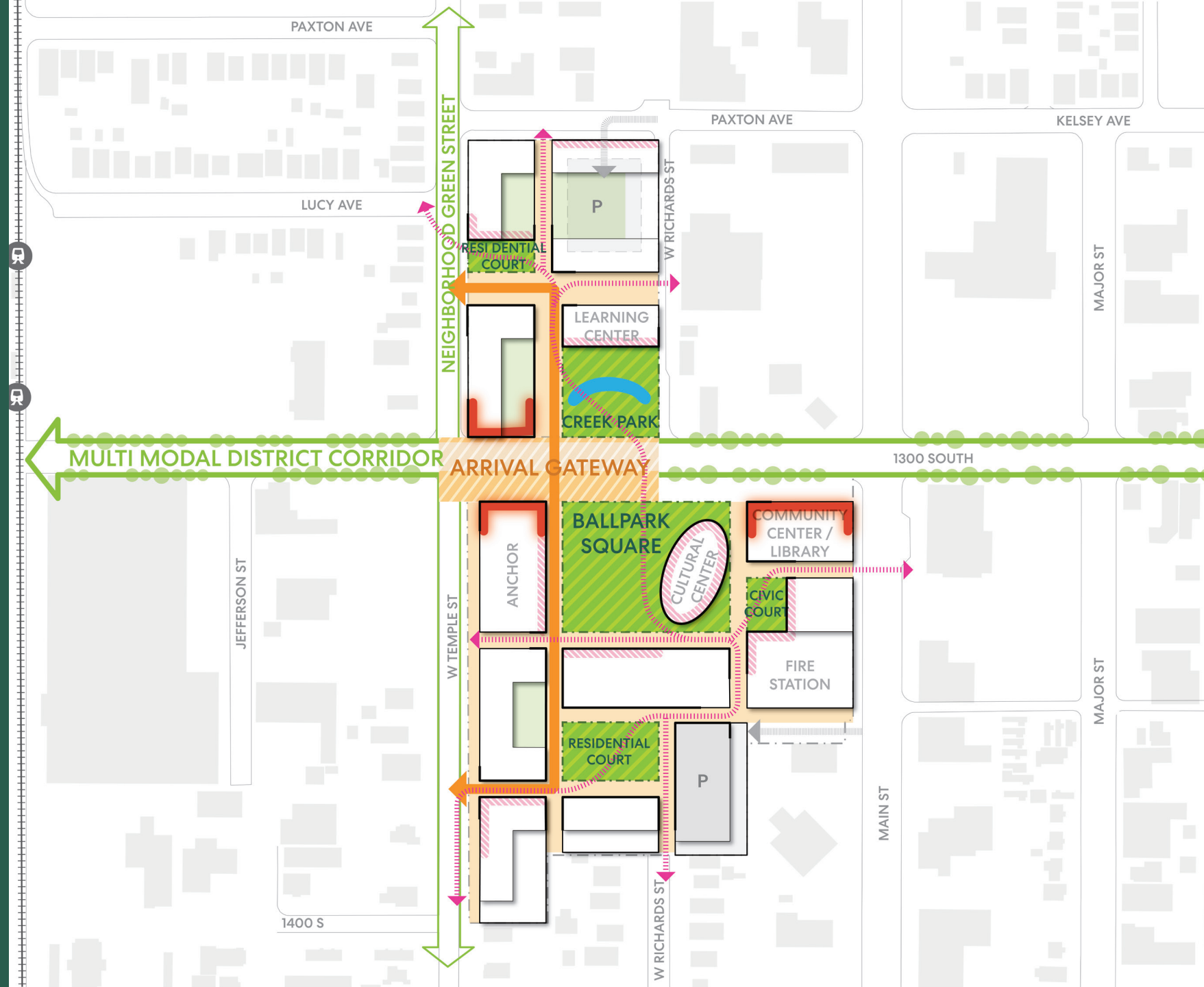


SCENARIO 3

Remove

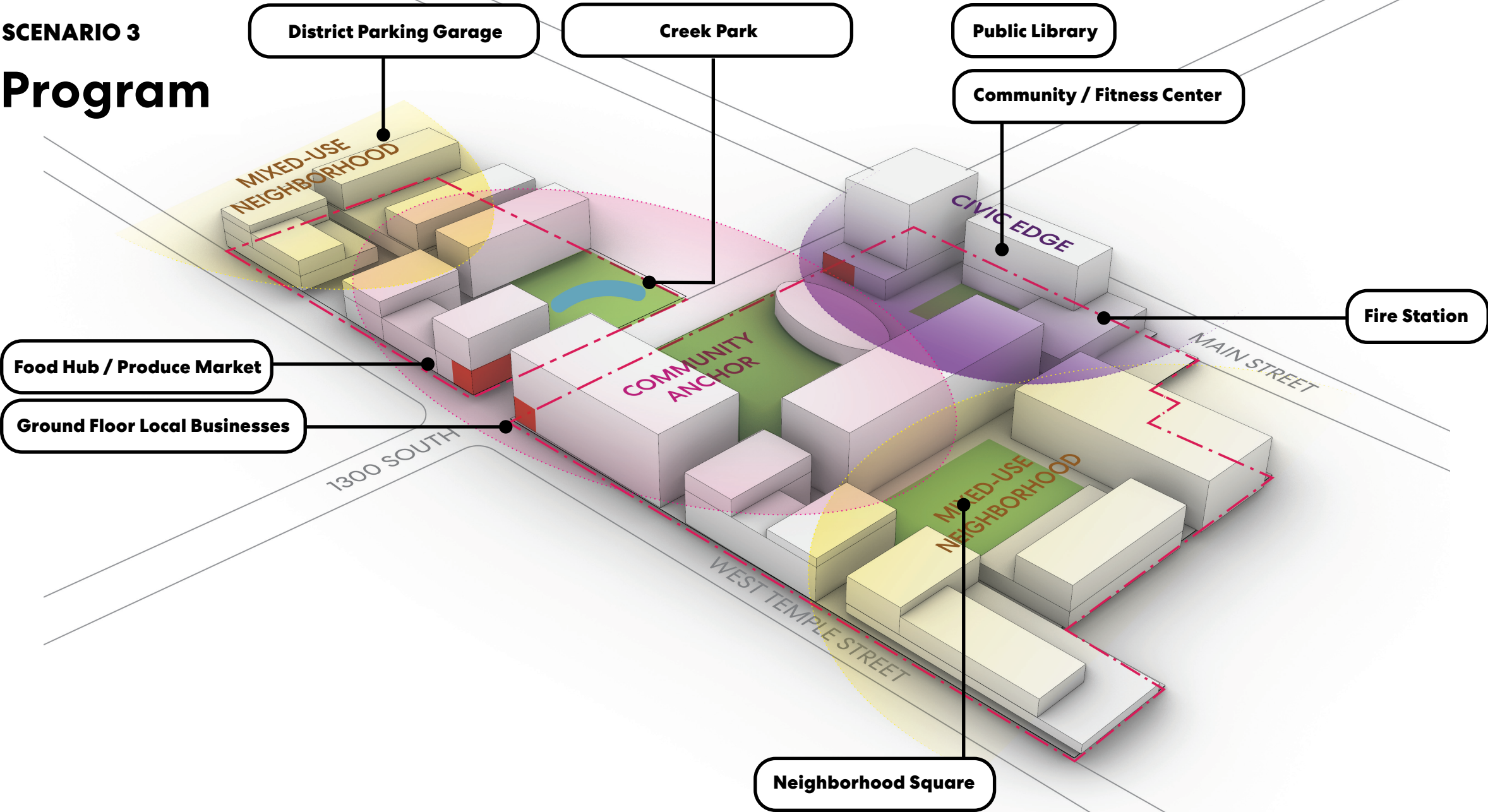
Scenario 3 fosters neighborhood-wide ecology with a procession of park spaces with signature design features including a partial daylighting of the three creeks buried under 1300 South.

Scenario 3 embeds civic, commercial, and residential life in unison with the natural world.



SCENARIO 3

Program



SCENARIO 3

Tanner Springs Park

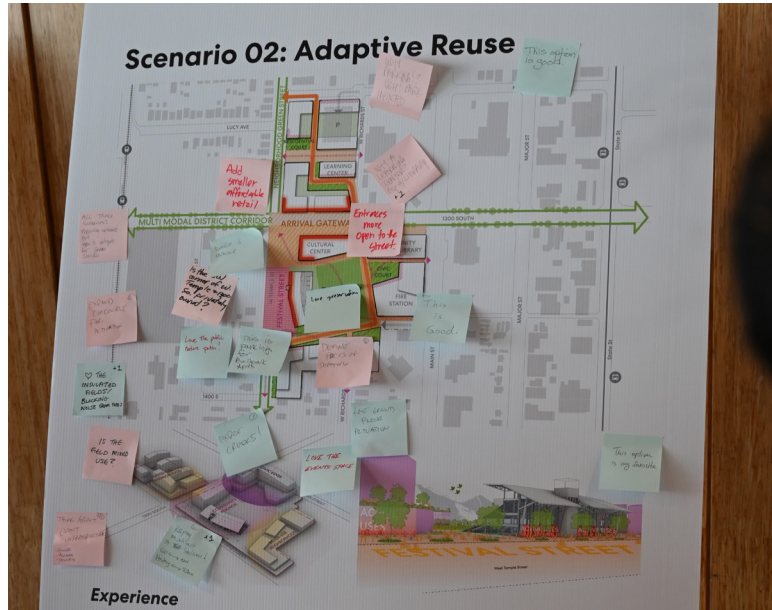
Portland, Oregon

- This is a 1 acre urban park, located within Pearl District, that uses stormwater to feed a natural water feature.
- The park features an “Art Wall” that honors the site’s industrial and ecological history.



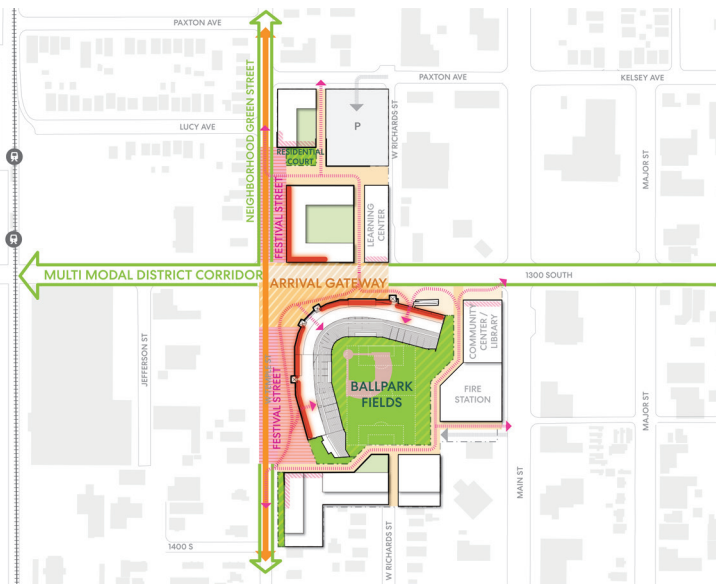
Stakeholder Ideation Session 2

November 19th, 2024

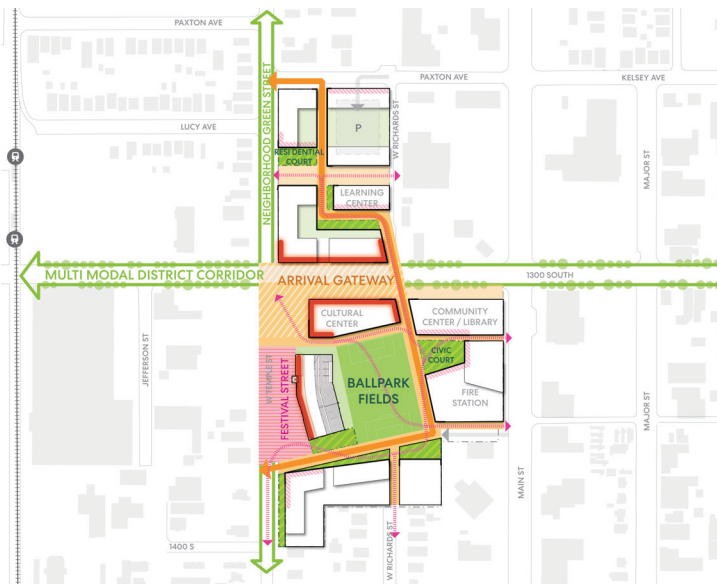


Questions/Guidance

Scenario 1 - Preserve



Scenario 2 - Adaptive Reuse



Scenario 3 - Remove

