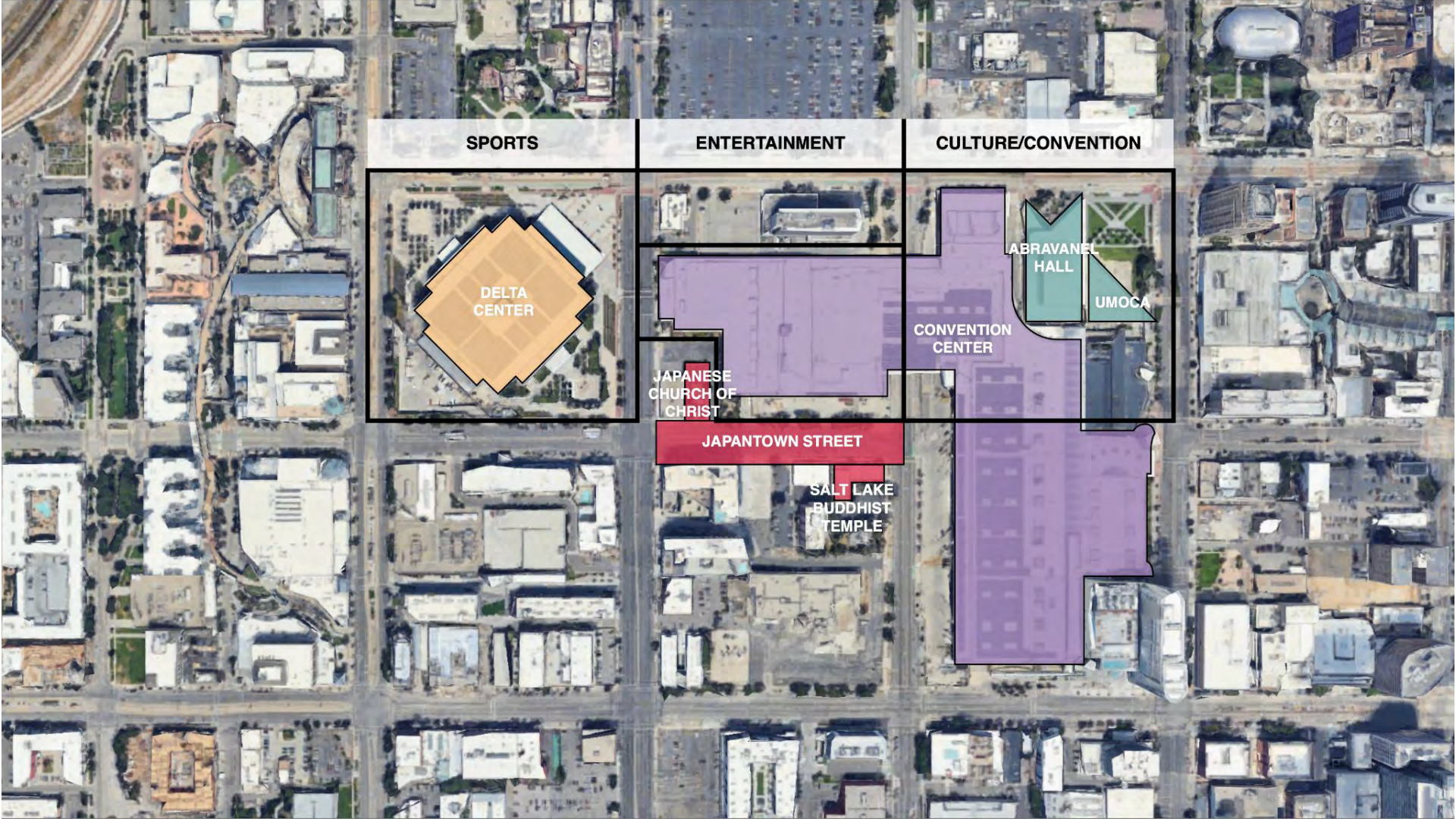


Salt Lake City Council

June 11, 2024



SPORTS

ENTERTAINMENT

CULTURE/CONVENTION

**DELTA
CENTER**

**JAPANESE
CHURCH OF
CHRIST**

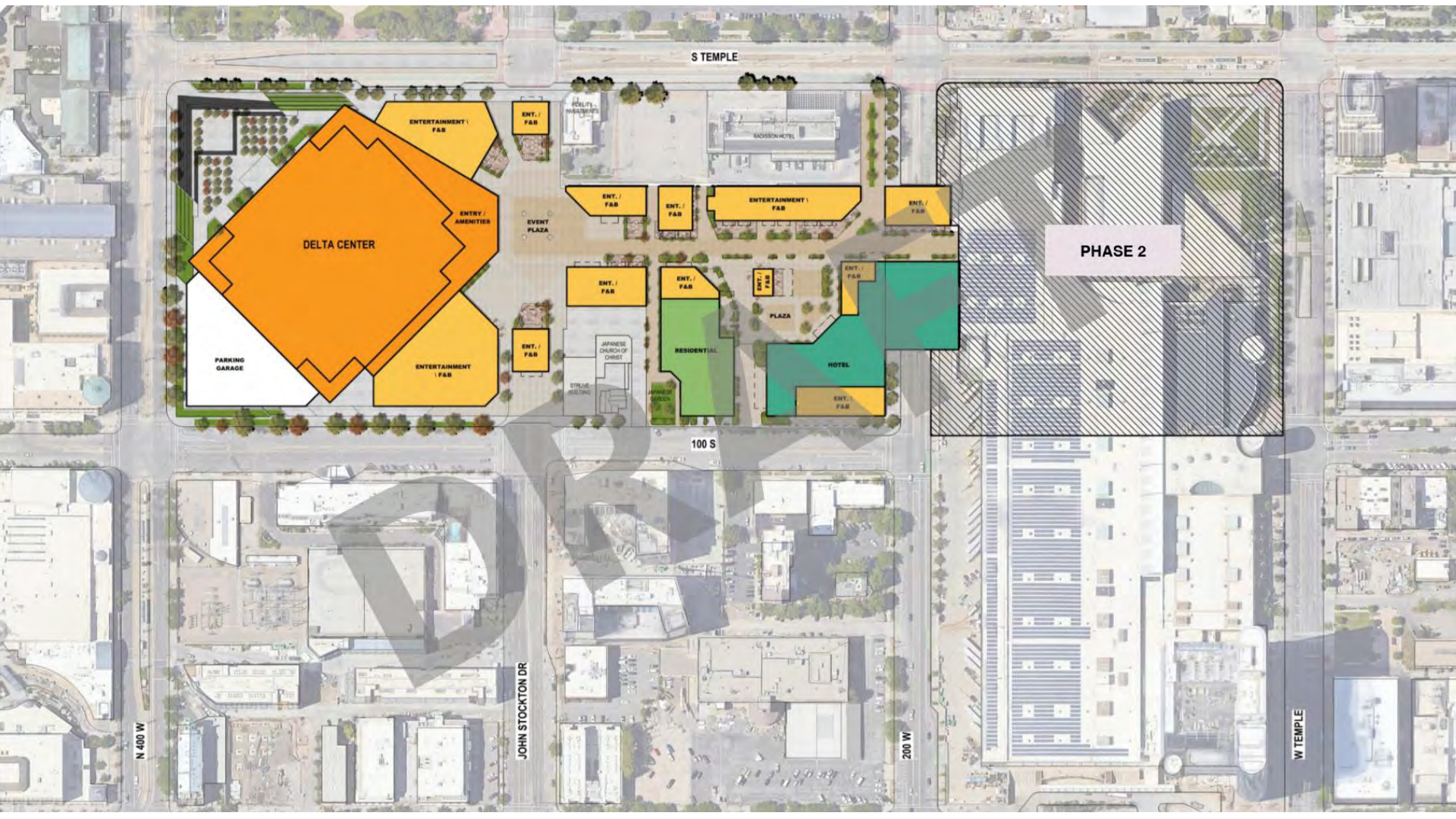
JAPANTOWN STREET

**SALT LAKE
BUDDHIST
TEMPLE**

**ABRAVANEL
HALL**

UMOCA

**CONVENTION
CENTER**



S TEMPLE

DELTA CENTER

PARKING
GARAGE

ENTERTAINMENT /
F&B

ENT. /
F&B

POLICE /
INVESTIGATIONS

RADISON HOTEL

ENT. /
F&B

ENT. /
F&B

ENTERTAINMENT /
F&B

ENT. /
F&B

EVENT
PLAZA

ENT. /
F&B

ENT. /
F&B

ENT. /
F&B

ENT. /
F&B

ENT. /
F&B

JAPANESE CHURCH OF
CHRIST

STRIDE
BUILDING

ENT. /
F&B

RESIDENTIAL

JAPANESE
GARDEN

PLAZA

ENT. /
F&B

HOTEL

ENT. /
F&B

PHASE 2

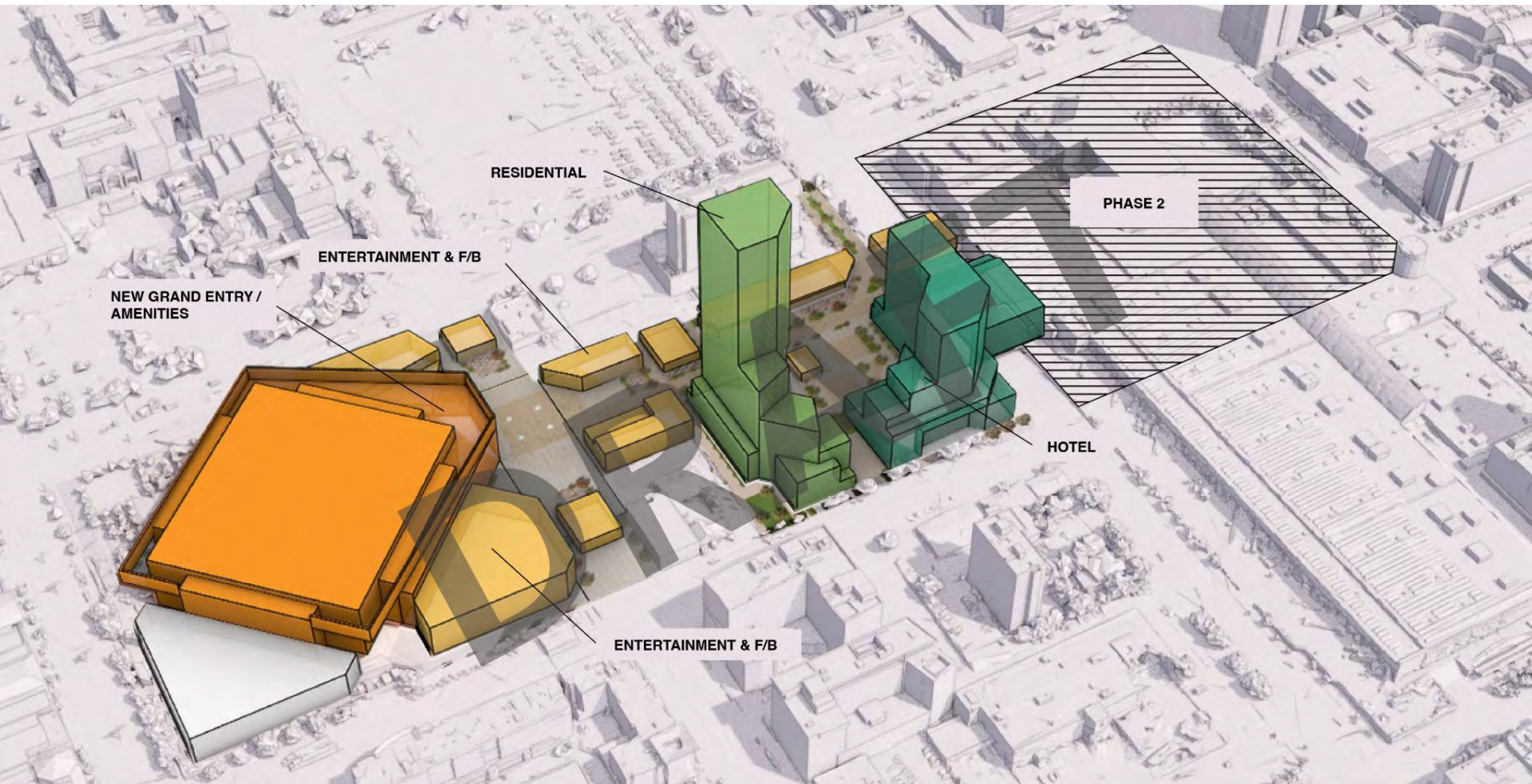
100 S

N 400 W

JOHN STOCKTON DR

200 W

W TEMPLE



RESIDENTIAL

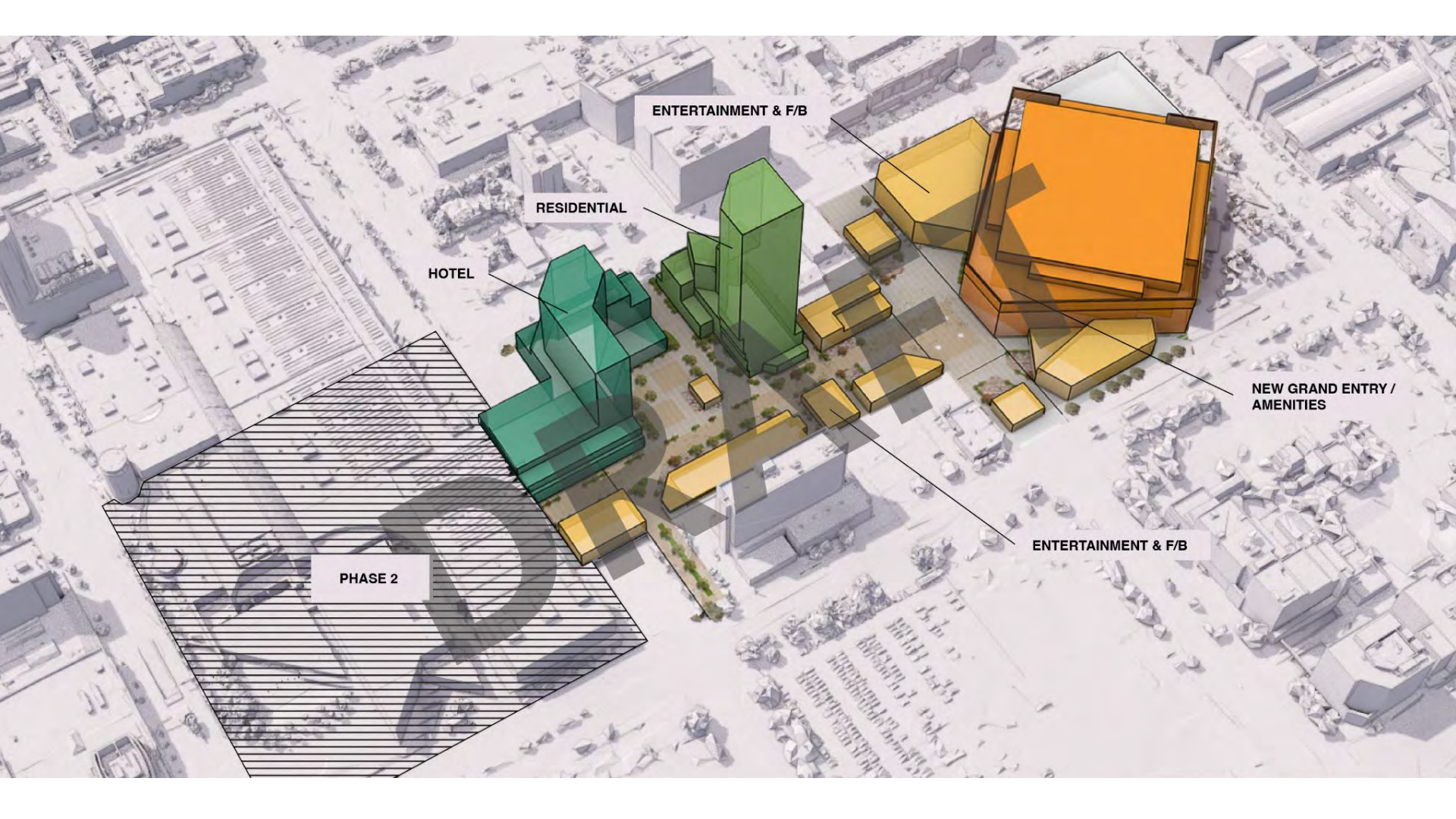
ENTERTAINMENT & F/B

NEW GRAND ENTRY /
AMENITIES

PHASE 2

HOTEL

ENTERTAINMENT & F/B



ENTERTAINMENT & F/B

RESIDENTIAL

HOTEL

NEW GRAND ENTRY /
AMENITIES

ENTERTAINMENT & F/B

PHASE 2



UTAH JAZZ

BE THERE BE THE

EVERY MOMENT

UTAH JAZZ

DELTA CENTER

UTAH
EST. 2024