

THE Power District

THE
Larry H. Miller
COMPANY



Miller
SPORTS + ENTERTAINMENT



leg•a•cy (n)

The long-lasting impact
of particular events and actions that took
place in the past, or
of a person's life.

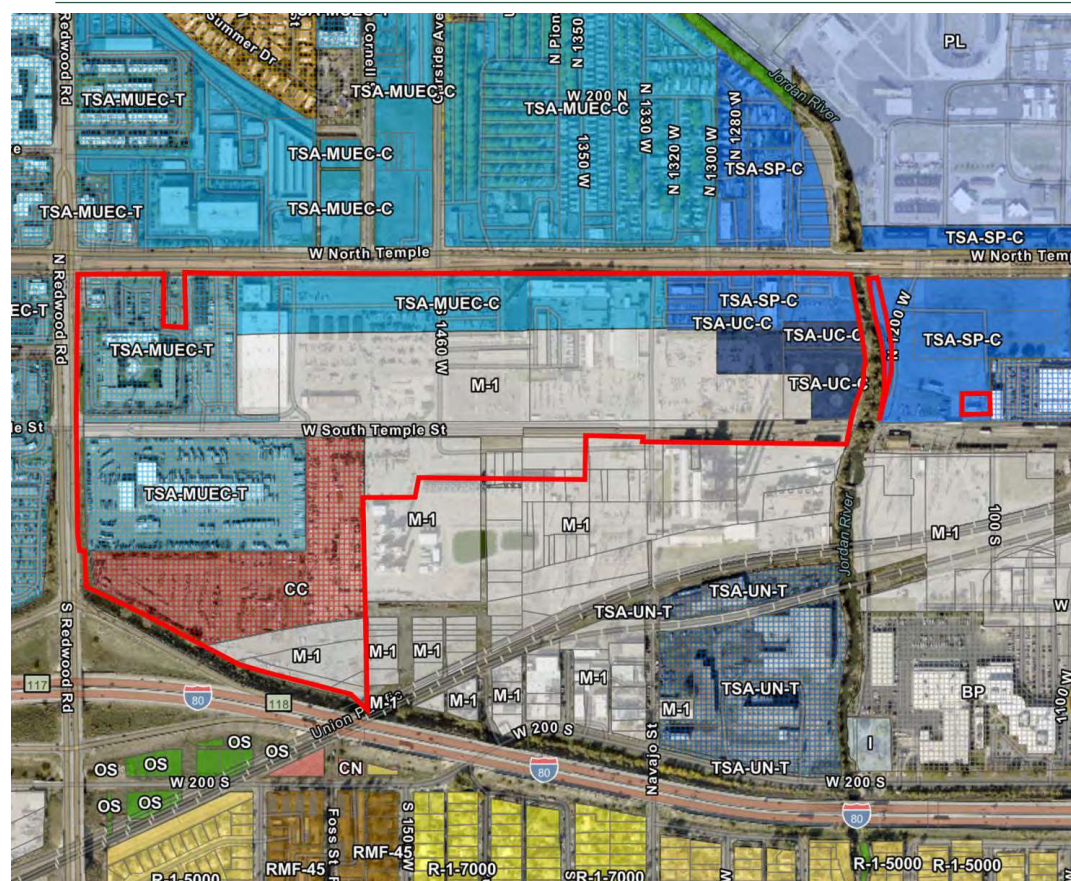


Public Engagement

- North Temple Community Task Force
- Jordan Meadows & Westpointe Community Council
- Rose Park Community Council
- Pacific Islander Chamber of Commerce
- Community Fairpark Safety Meeting
- Westside Coalition Annual Meeting
- Poplar Grove Community Council
- Fairpark Community Council
- Riverside Ballpark Ribbon Cutting
- Utah State Fair
- Hispanic Chamber of Commerce
- Rose Park Street Festival
- Groove in the Grove
- Get to the River Festival – Jordan River Commission
- Local legislators



Existing Conditions

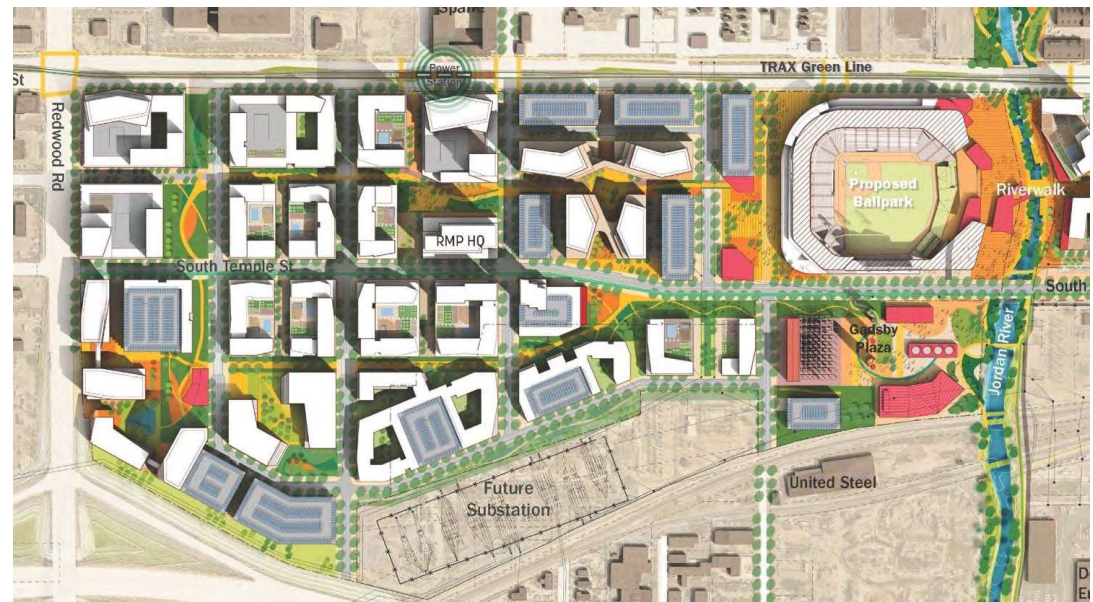


- Proposal would consolidate six vastly different zoning codes into one
- Large contiguous holding provides unique opportunity for master-planning and placemaking



Master-planning Approach

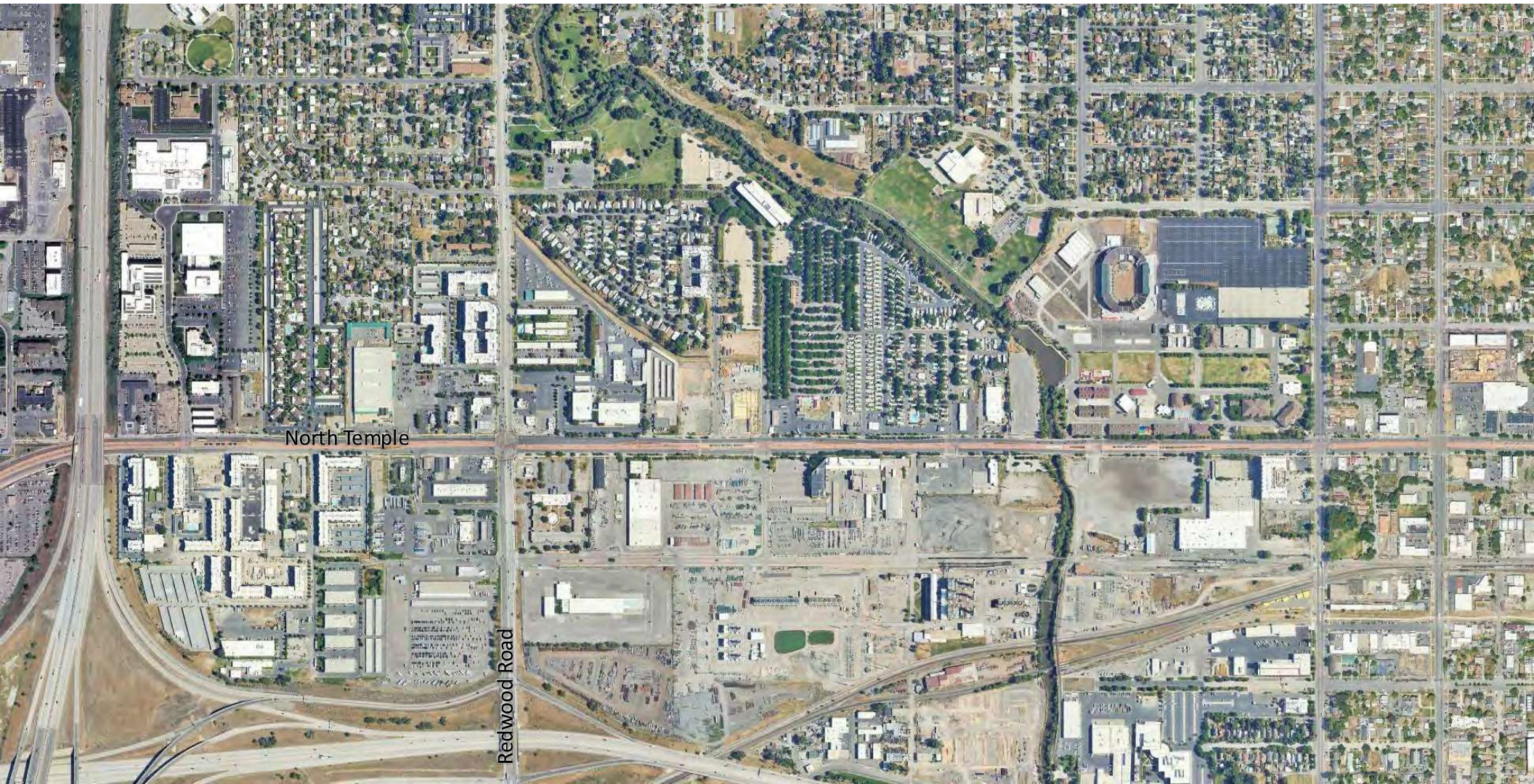
- Looking beyond our boundaries to knit together surrounding communities
 - Trails and open space
 - Improve transportation connectivity
 - Mixture of housing types
 - Regional amenities
 - Addition of jobs
- Focus on sustainability
 - Electric only community
 - Improves existing stormwater conditions
 - Adds ridership to existing transit
- Urban block design



Our Vision



The content and drawings are conceptual in nature and not intended to represent or be relied upon as specific designs for specific uses or outcomes. Copyright LHM, Inc. 2024



REAL
ESTATE

© Copyright Larry H. Miller Real Estate 2023